



ELECTRONIC COPY

LG687528278
Report verification at igi.org



March 8, 2025

IGI Report Number **LG687528278**

Description **LABORATORY GROWN DIAMOND**

Shape and Cutting Style **EMERALD CUT**

Measurements **7.26 X 4.95 X 3.87 MM**

GRADING RESULTS

Carat Weight **1.53 CARAT**

Color Grade **FANCY VIVID PINK**

Clarity Grade **VS 1**

March 8, 2025
IGI Report Number **LG687528278**
Description **LABORATORY GROWN DIAMOND**
Shape and Cutting Style **EMERALD CUT**
Measurements **7.26 X 4.95 X 3.87 MM**

GRADING RESULTS

Carat Weight **1.53 CARAT**

Color Grade **FANCY VIVID PINK**

Clarity Grade **VS 1**

ADDITIONAL GRADING INFORMATION

Polish **VERY GOOD**

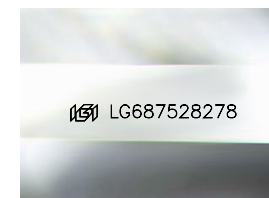
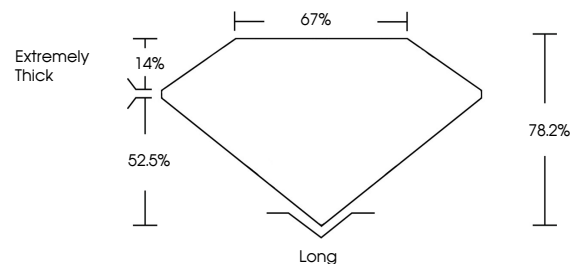
Symmetry **VERY GOOD**

Fluorescence **SLIGHT**

Inscription(s) **IGI LG687528278**

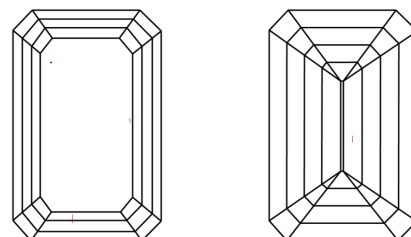
Comments: This Laboratory Grown Diamond was created by Chemical Vapor Deposition (CVD) growth process. Indications of post-growth treatment.

PROPORTIONS



Sample Image Used

CLARITY CHARACTERISTICS



KEY TO SYMBOLS

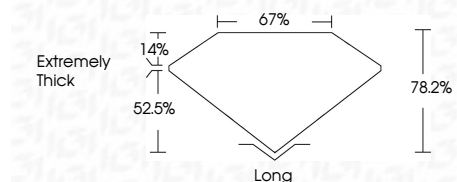
Red symbols indicate internal characteristics.
Green symbols indicate external characteristics.

COLOR

D E F G H I J Faint Very Light Light

CLARITY

IF	VS ¹⁻²	VS ¹⁻²	SI ¹⁻²	I ¹⁻³
Internally Flawless	Very Very Slightly Included	Very Slightly Included	Slightly Included	Included



ADDITIONAL GRADING INFORMATION

Polish **VERY GOOD**

Symmetry **VERY GOOD**

Fluorescence **SLIGHT**

Inscription(s) **IGI LG687528278**

Comments: This Laboratory Grown Diamond was created by Chemical Vapor Deposition (CVD) growth process. Indications of post-growth treatment.



IGI



March 8, 2025
IGI Report No. **LG687528278**
EMERALD CUT
Carat Weight **1.53 CARAT**
Color Grade **FANCY VIVID PINK**
Clarity Grade **VS 1**
Depth **78.2%**
Table **67%**
Girdle **Extremely Thick**
Culet **Long**
Polish **VERY GOOD**
Symmetry **VERY GOOD**
Fluorescence **SLIGHT**
Inscription(s) **IGI LG687528278**
Comments: This Laboratory Grown Diamond was created by Chemical Vapor Deposition (CVD) growth process. Indications of post-growth treatment.