



ELECTRONIC COPY

LG687525149
Report verification at igi.org



March 3, 2025
IGI Report Number **LG687525149**
Description **LABORATORY GROWN DIAMOND**
Shape and Cutting Style **CUT CORNERED SQUARE
MODIFIED BRILLIANT**
Measurements **6.56 X 6.54 X 4.24 MM**
GRADING RESULTS
Carat Weight **1.52 CARAT**
Color Grade **E**
Clarity Grade **VVS 2**

LABORATORY GROWN DIAMOND REPORT

March 3, 2025
IGI Report Number **LG687525149**
Description **LABORATORY GROWN DIAMOND**
Shape and Cutting Style **CUT CORNERED SQUARE
MODIFIED BRILLIANT**
Measurements **6.56 X 6.54 X 4.24 MM**

GRADING RESULTS

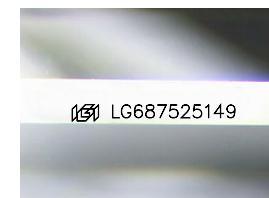
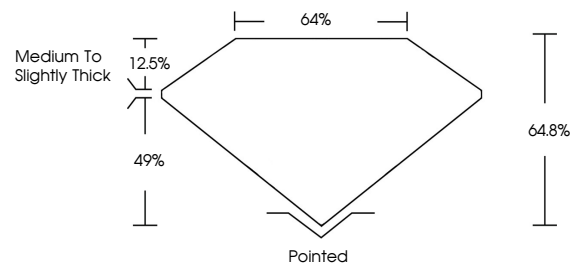
Carat Weight **1.52 CARAT**
Color Grade **E**
Clarity Grade **VVS 2**

ADDITIONAL GRADING INFORMATION

Polish **EXCELLENT**
Symmetry **EXCELLENT**
Fluorescence **NONE**
Inscription(s) **IGI LG687525149**

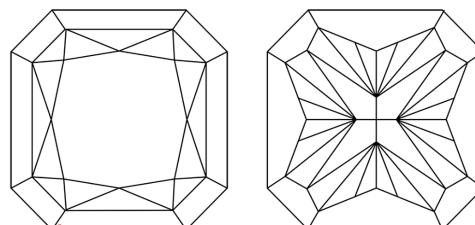
Comments: As Grown - No indication of post-growth treatment.
This Laboratory Grown Diamond was created by High Pressure High Temperature (HPHT) growth process.
Type II

PROPORTIONS



Sample Image Used

CLARITY CHARACTERISTICS



KEY TO SYMBOLS

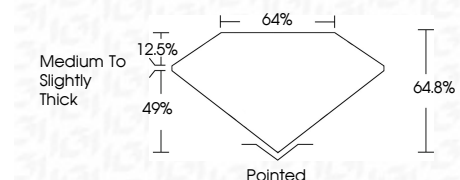
Red symbols indicate internal characteristics.
Green symbols indicate external characteristics.

COLOR

D E F G H I J Faint Very Light Light

CLARITY

IF	VS ¹⁻²	VS ¹⁻²	SI ¹⁻²	I ¹⁻³
Internally Flawless	Very Very Slightly Included	Very Slightly Included	Slightly Included	Included



ADDITIONAL GRADING INFORMATION

Polish **EXCELLENT**
Symmetry **EXCELLENT**
Fluorescence **NONE**
Inscription(s) **IGI LG687525149**
Comments: As Grown - No indication of post-growth treatment.
This Laboratory Grown Diamond was created by High Pressure High Temperature (HPHT) growth process.
Type II



March 3, 2025
IGI Report No. **LG687525149**
CUT CORNERED SQUARE MODIFIED BRILLIANT
6.56 X 6.54 X 4.24 MM
Carat Weight **1.52 CARAT**
Color Grade **E**
Clarity Grade **VVS 2**
Table **64.8%**
Girdle **49%**
Culet **Medium to Slightly Thick**
Polish **Excellent**
Symmetry **Excellent**
Fluorescence **NONE**
Inscription(s) **IGI LG687525149**
Comments: As Grown - No indication of post-growth treatment.
This Laboratory Grown Diamond was created by High Pressure High Temperature (HPHT) growth process.
Type II