



**ELECTRONIC COPY**

## LABORATORY GROWN DIAMOND REPORT

LG687519988  
Report verification at [igi.org](https://igi.org)

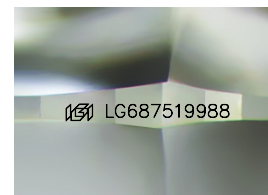
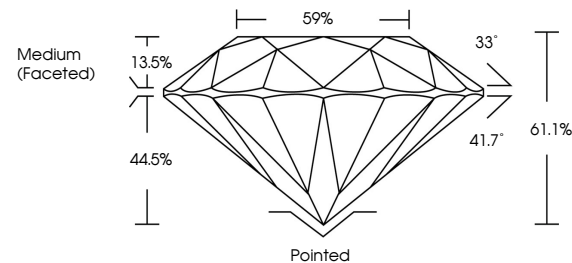
March 1, 2025	
IGI Report Number	LG687519988
Description	LABORATORY GROWN DIAMOND
Shape and Cutting Style	ROUND BRILLIANT
Measurements	7.55 - 7.57 X 4.62 MM
GRADING RESULTS	
Carat Weight	1.59 CARAT
Color Grade	D
Clarity Grade	VS 1
Cut Grade	EXCELLENT

### ADDITIONAL GRADING INFORMATION

Polish	EXCELLENT
Symmetry	EXCELLENT
Fluorescence	NONE
Inscription(s)	 LG687519988

Comments: This Laboratory Grown Diamond was created by Chemical Vapor Deposition (CVD) growth process.  
Type IIa

## PROPORTIONS



Sample Image Used

**COLOR**

D E F G H I J Faint Very Light Light

## CLARITY

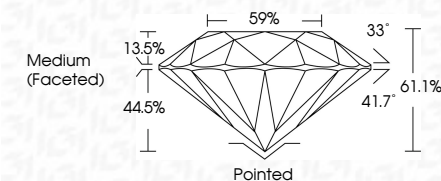
IF                      VS<sup>1-2</sup>                      VS<sup>1-2</sup>                      S<sup>1-2</sup>                      |<sup>1-3</sup>

Internally Flawless	Very Very Slightly Included	Very Slightly Included	Slightly Included	Included
------------------------	--------------------------------	---------------------------	----------------------	----------

## LABORATORY GROWN DIAMOND REPORT



March 1, 2025	
IGI Report Number	LG687519988
Description	LABORATORY GROWN DIAMOND
Shape and Cutting Style	ROUND BRILLIANT
Measurements	7.55 - 7.57 X 4.62 MM
GRADING RESULTS	
Carat Weight	1.59 CARAT
Color Grade	D
Clarity Grade	VS 1
Cut Grade	EXCELLENT



### ADDITIONAL GRADING INFORMATION

Polish	EXCELLENT
Symmetry	EXCELLENT
Fluorescence	NONE
Inscription(s)	 LG687519988
<p>Comments: This Laboratory Grown Diamond was created by Chemical Vapor Deposition (CVD) growth process.</p> <p>Type IIa</p>	



© IGI 2020, International Gemological Institute

FD - 10 20



THIS DOCUMENT WAS PRODUCED WITH THE FOLLOWING SECURITY MEASURES: SPECIAL DOCUMENT PAPER, INK SCREENS, WATERMARK, BACKGROUND DESIGNS, HOLOGRAM, AND OTHER SECURITY FEATURES NOT LISTED AND DO EXCEED DOCUMENT SECURITY INDUSTRY GUIDELINES

**www.igi.org**

March 1, 2025  
IGI Report No LG687519988  
ROUND BRILLIANT

7.55 - 7.57 X 4.62 MM

**1.55 - 1.57 X 4.82 MM**

**D**  
Color Grade

Clarity Grade	VS 1
---------------	------

Cut Grade	EXCELLENT
Depth	61.1%

Dep III	01.1%
Table	59%

Girdle

Culet	Pointed
-------	---------

Cutler	Pointed
Polish	EXCELLENT

Symmetry	EXCELLENT
Fluorescence	NONE

Fluorescence	NONE
Inscription(s)	157 LG687519988

Comments:

© 1997, 01/17/98

**Comments:**  
This Laboratory Grown Diamond was created by: Chemical Vapor Deposition

created by Chemical Vapor Deposition (CVD) growth process.

Type IIa