



ELECTRONIC COPY

LG687510713
Report verification at igi.org



February 28, 2025

IGI Report Number **LG687510713**

Description **LABORATORY GROWN DIAMOND**

Shape and Cutting Style **KITE STEP CUT**

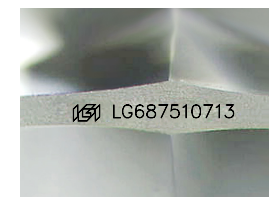
Measurements **9.88 X 5.96 X 3.55 MM**

GRADING RESULTS

Carat Weight **1.03 CARAT**

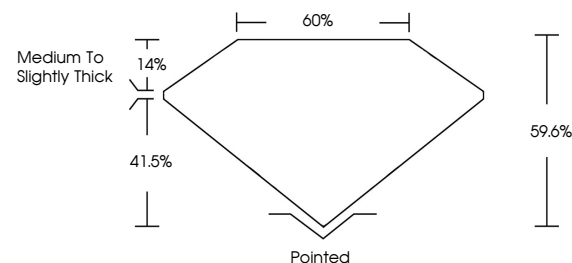
Color Grade **F**

Clarity Grade **VS 1**

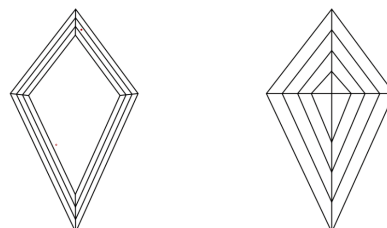


Sample Image Used

PROPORTIONS



CLARITY CHARACTERISTICS



KEY TO SYMBOLS

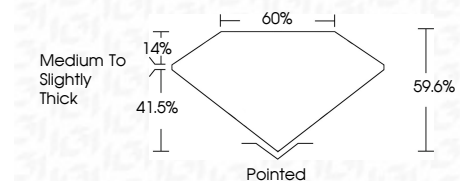
Red symbols indicate internal characteristics.
Green symbols indicate external characteristics.

COLOR

D E F G H I J Faint Very Light Light

CLARITY

IF	VS ¹⁻²	VS ¹⁻²	SI ¹⁻²	I ¹⁻³
Internally Flawless	Very Very Slightly Included	Very Slightly Included	Slightly Included	Included



ADDITIONAL GRADING INFORMATION

Polish **EXCELLENT**

Symmetry **EXCELLENT**

Fluorescence **NONE**

Inscription(s) **IGI LG687510713**

Comments: This Laboratory Grown Diamond was created by Chemical Vapor Deposition (CVD) growth process. Type IIa



February 28, 2025
IGI Report No. LG687510713
KITE STEP CUT

9.88 X 5.96 X 3.55 MM

1.03 CARAT
F

Color Grade
Clarity Grade
Table
Depth
Girdle
Medium to Slightly Thick

Polished
EXCELLENT
EXCELLENT
NONE
IGI LG687510713

Comments: This Laboratory Grown Diamond was created by Chemical Vapor Deposition (CVD) growth process. Type IIa