



**ELECTRONIC COPY**

## LABORATORY GROWN DIAMOND REPORT

|                         |  |
|-------------------------|--|
| February 26, 2025       |  |
| IGI Report Number       | LG687501693                                    |
| Description             | LABORATORY GROWN DIAMOND                       |
| Shape and Cutting Style | CUT CORNERED RECTANGULAR<br>MODIFIED BRILLIANT |
| Measurements            | 8.11 X 5.72 X 3.79 MM                          |

## GRADING RESULTS

|               |            |
|---------------|------------|
| Carat Weight  | 1.54 CARAT |
| Color Grade   | E          |
| Clarity Grade | VS 1       |

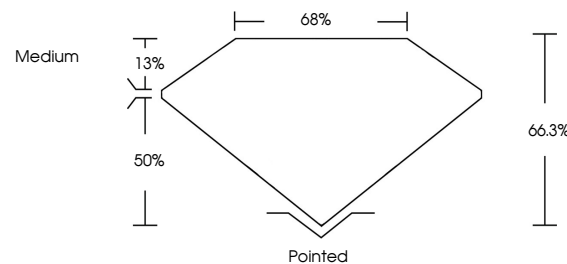
### ADDITIONAL GRADING INFORMATION

|                |   |
|----------------|---|
| Polish         | EXCELLENT   |
| Symmetry       | EXCELLENT   |
| Fluorescence   | NONE  |
| Inscription(s) |  LG687501693 |

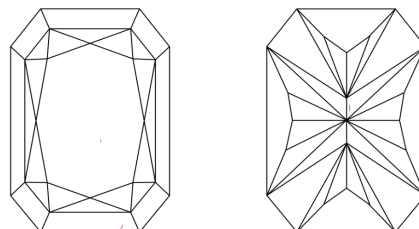
Comments: This Laboratory Grown Diamond was created by Chemical Vapor Deposition (CVD) growth process.  
Type IIa

LG687501693  
Report verification at [lgi.org](https://lgi.org)

## PROPORTIONS

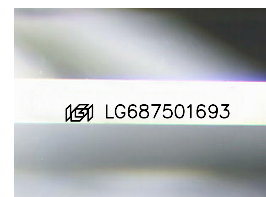


## CLARITY CHARACTERISTICS



### KEY TO SYMBOLS

Red symbols indicate internal characteristics.  
Green symbols indicate external characteristics.



Sample Image Used

## COLOR

D E F G H I J Faint Very Light Light

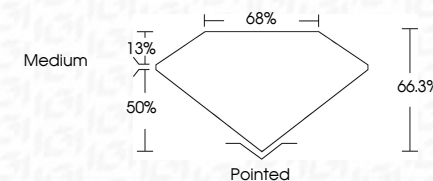
## CLARITY

| IF                  | VS <sup>1-2</sup>           | VS <sup>1-2</sup>      | SI <sup>1-2</sup> | I <sup>1-3</sup> |
|---------------------|-----------------------------|------------------------|-------------------|------------------|
| Internally Flawless | Very Very Slightly Included | Very Slightly Included | Slightly Included | Included         |

## LABORATORY GROWN DIAMOND REPORT



|                         |   |
|-------------------------|---|
| February 26, 2025       |   |
| IGI Report Number       | LG687501693                                       |
| Description             | LABORATORY GROWN DIAMOND                          |
| Shape and Cutting Style | CUT CORNERED<br>RECTANGULAR MODIFIED<br>BRILLIANT |
| Measurements            | 8.11 X 5.72 X 3.79 MM                             |
| <b>GRADING RESULTS</b>  |   |
| Carat Weight            | 1.54 CARAT  |
| Color Grade             | E   |
| Clarity Grade           | VS 1  |



### ADDITIONAL GRADING INFORMATION

|  |                            |
|--|----------------------------|
| Polish   | EXCELLENT                  |
| Symmetry   | EXCELLENT                  |
| Fluorescence   | NONE                       |
| Inscription(s)   | <del>163</del> LG687501693 |
| Comments: This Laboratory Grown Diamond was created by Chemical Vapor Deposition (CVD) growth process. |                            |
| Type IIa   |                            |



© IGI 2020, International Gemological Institute

FD - 10 20

**www.igi.org**

THIS DOCUMENT WAS PRODUCED WITH THE FOLLOWING SECURITY MEASURES: SPECIAL DOCUMENT PAPER, INK SCREENS, WATERMARK, BACKGROUND DESIGNS, HOLOGRAM AND OTHER SECURITY FEATURES NOT LISTED AND DO EXCEED DOCUMENT SECURITY INDUSTRY GUIDELINES

|                                       |                 |
|---------------------------------------|-----------------|
| February 24, 2025                     | 1.54 CARAT      |
| GI Report No. LG587501693             | E               |
| CUT CORNERED RECT. MODIFIED BRILLIANT | VS 1            |
|                                       | 66.5%           |
|                                       | 65%             |
|                                       | Medium          |
|                                       | Pointed         |
|                                       | EXCELLENT       |
|                                       | EXCELLENT       |
|                                       | NONE            |
|                                       | 65% LG587501693 |

Comments: Very Gray, Diamond was created by Chemical Vapor Deposition (CVD) growth process.  
Type IIa