



**ELECTRONIC COPY**

LG686507683  
Report verification at [igi.org](http://igi.org)



March 12, 2025  
IGI Report Number **LG686507683**  
Description **LABORATORY GROWN DIAMOND**  
Shape and Cutting Style **EMERALD CUT**  
Measurements **11.41 X 6.53 X 3.88 MM**  
**GRADING RESULTS**  
Carat Weight **3.00 CARATS**  
Color Grade **FANCY INTENSE PINK**  
Clarity Grade **VS 2**

March 12, 2025  
IGI Report Number **LG686507683**  
Description **LABORATORY GROWN DIAMOND**  
Shape and Cutting Style **EMERALD CUT**  
Measurements **11.41 X 6.53 X 3.88 MM**

**GRADING RESULTS**

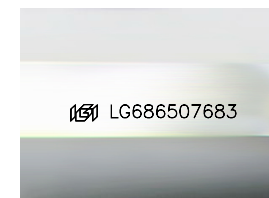
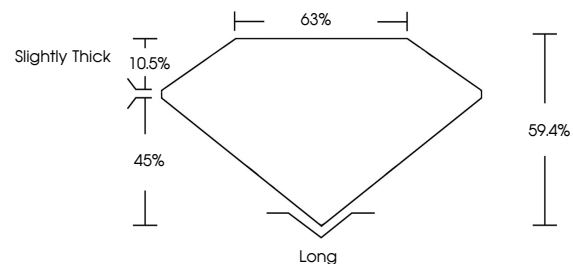
Carat Weight **3.00 CARATS**  
Color Grade **FANCY INTENSE PINK**  
Clarity Grade **VS 2**

**ADDITIONAL GRADING INFORMATION**

Polish **EXCELLENT**  
Symmetry **EXCELLENT**  
Fluorescence **SLIGHT**  
Inscription(s) **LG686507683**

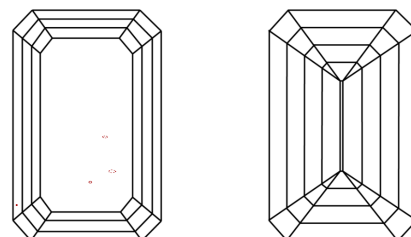
Comments: This Laboratory Grown Diamond was created by Chemical Vapor Deposition (CVD) growth process.  
Indications of post-growth treatment.

**PROPORTIONS**



Sample Image Used

**CLARITY CHARACTERISTICS**



**KEY TO SYMBOLS**

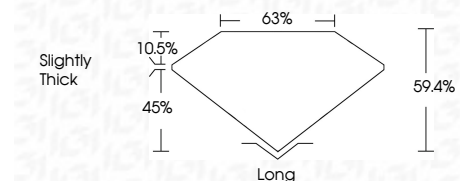
Red symbols indicate internal characteristics.  
Green symbols indicate external characteristics.

**COLOR**

D E F G H I J Faint Very Light Light

**CLARITY**

IF	VS <sup>1-2</sup>	VS <sup>1-2</sup>	SI <sup>1-2</sup>	I <sup>1-3</sup>
Internally Flawless	Very Very Slightly Included	Very Slightly Included	Slightly Included	Included



**ADDITIONAL GRADING INFORMATION**

Polish **EXCELLENT**  
Symmetry **EXCELLENT**  
Fluorescence **SLIGHT**  
Inscription(s) **LG686507683**  
Comments: This Laboratory Grown Diamond was created by Chemical Vapor Deposition (CVD) growth process.  
Indications of post-growth treatment.



March 12, 2025  
IGI Report No **LG686507683**  
**EMERALD CUT**  
**3.00 CARATS**  
Carat Weight  
Color Grade **FANCY INTENSE PINK**  
Clarity Grade **VS 2**  
Depth **59.4%**  
Table **63%**  
Girdle **Slightly Thick**  
Culet **Long**  
Polish **EXCELLENT**  
Symmetry **EXCELLENT**  
Fluorescence **SLIGHT**  
Inscription(s) **LG686507683**  
Comments: This Laboratory Grown Diamond was created by Chemical Vapor Deposition (CVD) growth process.  
Indications of post-growth treatment.