



**ELECTRONIC COPY**

LG685589106  
Report verification at igi.org



February 27, 2025

IGI Report Number **LG685589106**

Description **LABORATORY GROWN DIAMOND**

Shape and Cutting Style **CUSHION MIXED CUT**

Measurements **12.56 X 9.00 X 6.28 MM**

**GRADING RESULTS**

Carat Weight **6.82 CARATS**

Color Grade **G**

Clarity Grade **VS 1**

February 27, 2025

IGI Report Number **LG685589106**

Description **LABORATORY GROWN DIAMOND**

Shape and Cutting Style **CUSHION MIXED CUT**

Measurements **12.56 X 9.00 X 6.28 MM**

**GRADING RESULTS**

Carat Weight **6.82 CARATS**

Color Grade **G**

Clarity Grade **VS 1**

**ADDITIONAL GRADING INFORMATION**

Polish **EXCELLENT**

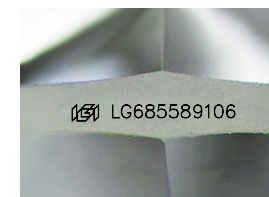
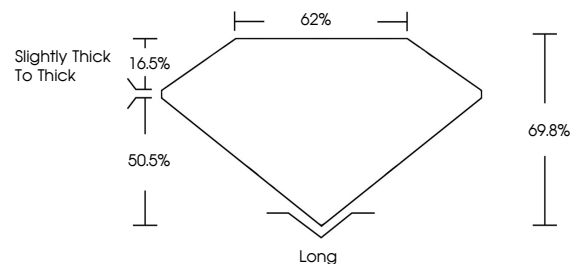
Symmetry **EXCELLENT**

Fluorescence **NONE**

Inscription(s) **IGI LG685589106**

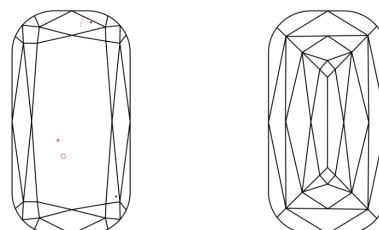
Comments: This Laboratory Grown Diamond was created by Chemical Vapor Deposition (CVD) growth process. Type IIa

**PROPORTIONS**



Sample Image Used

**CLARITY CHARACTERISTICS**



**KEY TO SYMBOLS**

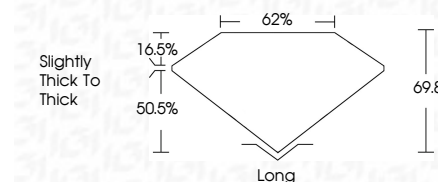
Red symbols indicate internal characteristics.  
Green symbols indicate external characteristics.

**COLOR**

D E F G H I J Faint Very Light Light

**CLARITY**

IF	VS <sup>1-2</sup>	VS <sup>1-2</sup>	SI <sup>1-2</sup>	I <sup>1-3</sup>
Internally Flawless	Very Very Slightly Included	Very Slightly Included	Slightly Included	Included



**ADDITIONAL GRADING INFORMATION**

Polish **EXCELLENT**

Symmetry **EXCELLENT**

Fluorescence **NONE**

Inscription(s) **IGI LG685589106**

Comments: This Laboratory Grown Diamond was created by Chemical Vapor Deposition (CVD) growth process. Type IIa



**IGI**



February 27, 2025  
IGI Report No LG685589106  
CUSHION MIXED CUT

12.56 X 9.00 X 6.28 MM  
6.82 CARATS  
G  
VS 1  
69.8%  
62%  
Slightly Thick To Thick

Long  
EXCELLENT  
EXCELLENT  
NONE  
IGI LG685589106

Comments: This Laboratory Grown Diamond was created by Chemical Vapor Deposition (CVD) growth process. Type IIa