



**INTERNATIONAL  
GEMOLOGICAL  
INSTITUTE**

**ELECTRONIC COPY**

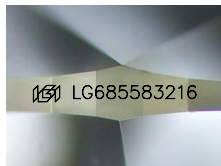
**LG685583216**



February 22, 2025  
**IGI Report Number** LG685583216  
**OVAL BRILLIANT**  
**LABORATORY GROWN DIAMOND**  
**7.98 X 5.54 X 3.50 MM**  
**Carat Weight** 0.97 CARAT  
**Color Grade** E  
**Clarity Grade** VS 1  
**Polish** EXCELLENT  
**Symmetry** EXCELLENT  
**Fluorescence** NONE  
**Inscription(s)** IGI LG685583216

**LABORATORY GROWN DIAMOND REPORT**

February 22, 2025  
**IGI Report Number** LG685583216  
**Description** LABORATORY GROWN DIAMOND  
**Shape and Cutting Style** OVAL BRILLIANT  
**Measurements** 7.98 X 5.54 X 3.50 MM



Sample Image Used

Comments: This Laboratory Grown Diamond was created by Chemical Vapor Deposition (CVD) growth process. Type IIa

**GRADING RESULTS**

**Carat Weight** 0.97 CARAT  
**Color Grade** E  
**Clarity Grade** VS 1

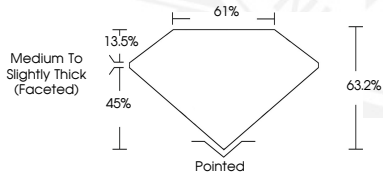
**ADDITIONAL GRADING INFORMATION**

**Polish** EXCELLENT  
**Symmetry** EXCELLENT  
**Fluorescence** NONE  
**Inscription(s)** IGI LG685583216

Comments: This Laboratory Grown Diamond was created by Chemical Vapor Deposition (CVD) growth process. Type IIa



February 22, 2025  
**IGI Report Number** LG685583216  
**OVAL BRILLIANT**  
**LABORATORY GROWN DIAMOND**  
**7.98 X 5.54 X 3.50 MM**  
**Carat Weight** 0.97 CARAT  
**Color Grade** E  
**Clarity Grade** VS 1  
**Polish** EXCELLENT  
**Symmetry** EXCELLENT  
**Fluorescence** NONE  
**Inscription(s)** IGI LG685583216



Comments: This Laboratory Grown Diamond was created by Chemical Vapor Deposition (CVD) growth process. Type IIa

THIS DOCUMENT WAS PRODUCED WITH THE FOLLOWING SECURITY MEASURES: SPECIAL DOCUMENT PAPER, INK SCREENS, WATERMARK, BACKGROUND DESIGN, HOLOGRAM AND OTHER SECURITY FEATURES NOT LISTED AND DO EXCEED DOCUMENT SECURITY INDUSTRY GUIDELINES.

For terms & conditions and to verify this report, please visit [www.igi.org](http://www.igi.org)