

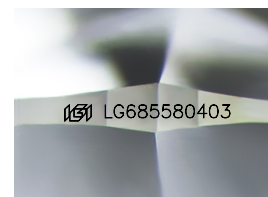
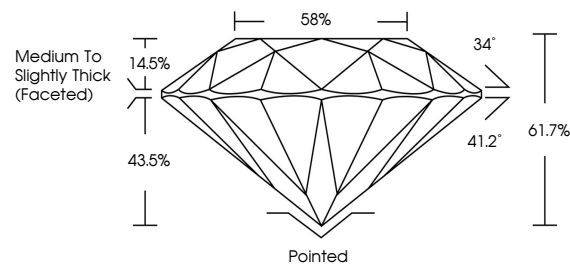


ELECTRONIC COPY

LABORATORY GROWN DIAMOND REPORT

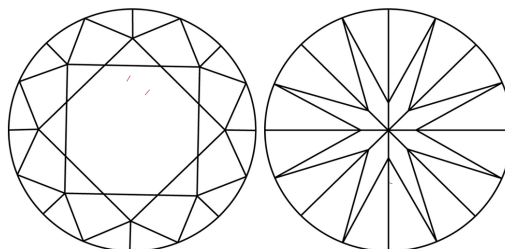
LG685580403
Report verification at igi.org

PROPORTIONS



Sample Image Used

CLARITY CHARACTERISTICS



KEY TO SYMBOLS

Red symbols indicate internal characteristics.
Green symbols indicate external characteristics.

COLOR

D E F G H I J Faint Very Light Light

CLARITY

IF WS¹⁻² VS¹⁻² SI¹⁻² |¹⁻³

Internally Flawless	Very Very Slightly Included	Very Slightly Included	Slightly Included	Included
------------------------	--------------------------------	---------------------------	----------------------	----------



© IGI 2020, International Gemological Institute

FD - 10 20

www.igi.org

LABORATORY GROWN DIAMOND REPORT



February 28, 2025

IGI Report Number **LG685580403**Description **LABORATORY GROWN DIAMOND**Shape and Cutting Style **ROUND BRILLIANT**

Measurements 6.59 - 6.63 X 4.08 MM

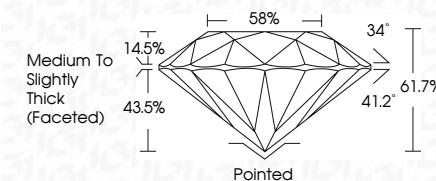
GRADING RESULTS

Carat Weight 1.09 CARAT

Color Grade D

Clarity Grade **VS 2**

Cut Grade **IDEAL**



ADDITIONAL GRADING INFORMATION

Polish **EXCELLENT**Symmetry **EXCELLENT**Fluorescence **NONE**Inscription(s) LG685580403

Comments: As Grown - No indication of post-growth treatment.

This Laboratory Grown Diamond was created by High Pressure High Temperature (HPHT) growth process.

Type II



February 28, 2025	
GJ Report No LG46590403	
ROUND BRILLIANT	
Weight - 6.59 - 6.83 X 4.08 MM	
Carat Weight	1.09 CARAT
Color Grade	D
Clarity Grade	VVS 2
Cut Grade	IDEAL
Depth	61.7%
Table	85%
Girdle	Medium to Slightly Thick Facetted
Culet	Pointed
Pavil Symmetry	EXCELLENT
Fluorescence	EXCELLENT
Inclusions (Comments)	NONE
	#68 LG46590403
Comments: As Grown - No indication of post-growth treatment.	
This Laboratory Growth Diamond was created by High Pressure High Temperature (HPHT) growth process.	
Type IIa	