



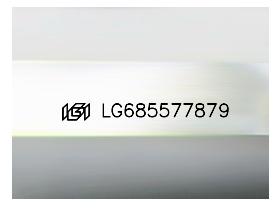
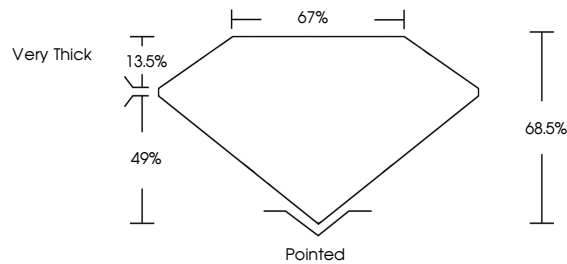
**INTERNATIONAL  
GEMOLOGICAL  
INSTITUTE**

**ELECTRONIC COPY**

## LABORATORY GROWN DIAMOND REPORT

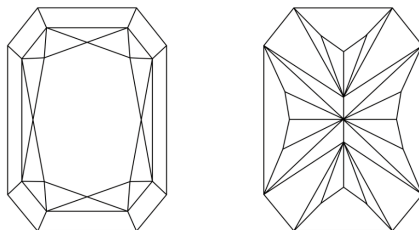
LG685577879  
Report verification at [igi.org](https://www.igi.org)

## PROPORTIONS



Sample Image Used

## CLARITY CHARACTERISTICS



## KEY TO SYMBOLS

Red symbols indicate internal characteristics.  
Green symbols indicate external characteristics.

**COLOR**

D E F G H I J Faint Very Light Light

## CLARITY

IF	WS <sup>1-2</sup>	VS <sup>1-2</sup>	SI <sup>1-2</sup>	I <sup>1-3</sup>
----	-------------------	-------------------	-------------------	------------------

Internally Flawless	Very Very Slightly Included	Very Slightly Included	Slightly Included	Included
------------------------	--------------------------------	---------------------------	----------------------	----------



© IGI 2020, International Gemological Institute

FD - 10 20

## LABORATORY GROWN DIAMOND REPORT



March 1, 2025

IGI Report Number **LG685577879**

Description	LABORATORY GROWN DIAMOND
-------------	--------------------------

Shape and Cutting Style

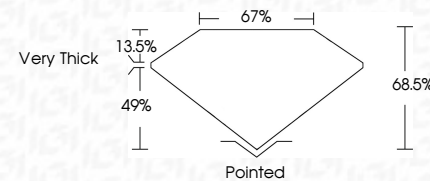
CUT CORNERED  
RECTANGULAR MODIFIED  
BRILLIANT

Measurements **7.92 X 5.56 X 3.81 MM**

## GRADING RESULTS

Carat Weight **1.50 CARAT**

Color Grade **D**

Clarity Grade **INTERNALLY FLAWLESS**

### ADDITIONAL GRADING INFORMATION

Polish **EXCELLENT**

Symmetry **EXCELLENT**

Fluorescence **NONE**Inscription(s)  LG685577879

Comments: This Laboratory Grown Diamond was created by Chemical Vapor Deposition (CVD) growth process.  
Type IIa



IG

March 1, 2025	GI Report NG LG685577879	CUT CORNERED RECT. MODIFIED BRILLIANT
79.92 X 5.55 X 3.81 MM	1.50 CARAT	
Color Weight	D	
Color Grade	IF	
Clarity Grade	68.5%	
Depth	67%	
Table	Very Thick	
Girdle		
Quiet	Pointed	
Polish	EXCELLENT	
Symmetry	EXCELLENT	
Fluorescence	NONE	
Inscriptions(s)	1881 LG685577879	
Comments: This Laboratory Grown Diamond was created by Chemical Vapor Deposition (CVD) growth process. Type IIa		

**Comments:**  
This Laboratory Grown Diamond was  
created by Chemical Vapor Deposition  
(CVD) growth process.

**www.igi.org**