



**ELECTRONIC COPY**

## LABORATORY GROWN DIAMOND REPORT

|                         |  |
|-------------------------|--|
| February 25, 2025       |  |
| IGI Report Number       | LG685566130                                    |
| Description             | LABORATORY GROWN DIAMOND                       |
| Shape and Cutting Style | CUT CORNERED RECTANGULAR<br>MODIFIED BRILLIANT |
| Measurements            | 8.11 X 5.71 X 3.87 MM                          |

## GRADING RESULTS

|               |            |
|---------------|------------|
| Carat Weight  | 1.57 CARAT |
| Color Grade   | E          |
| Clarity Grade | VS2        |

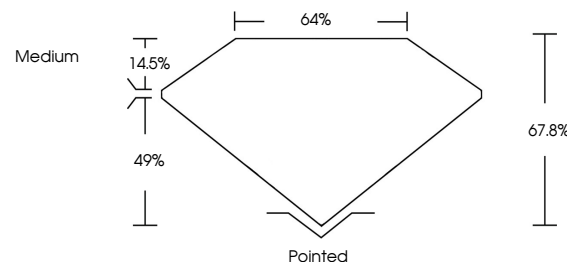
### ADDITIONAL GRADING INFORMATION

|                |   |
|----------------|---|
| Polish         | EXCELLENT   |
| Symmetry       | EXCELLENT   |
| Fluorescence   | NONE  |
| Inscription(s) |  LG685566130 |

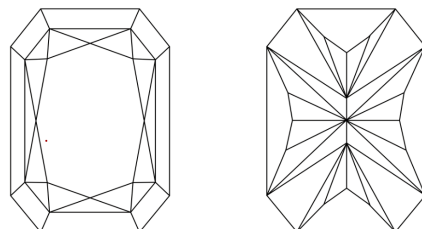
Comments: This Laboratory Grown Diamond was created by Chemical Vapor Deposition (CVD) growth process.  
Type IIa

LG685566130  
Report verification at [lgi.org](https://lgi.org)

## PROPORTIONS

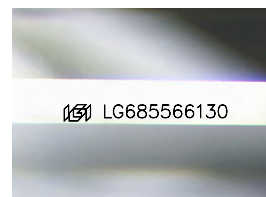


## CLARITY CHARACTERISTICS



### KEY TO SYMBOLS

Red symbols indicate internal characteristics.  
Green symbols indicate external characteristics.



Sample Image Used

## COLOR

D E F G H I J Faint Very Light Light

## CLARITY

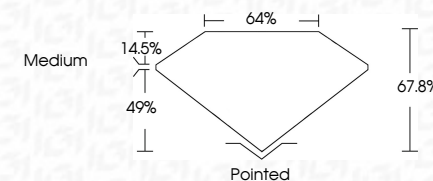
IF      VWS<sup>1-2</sup>      VS<sup>1-2</sup>      SI<sup>1-2</sup>      I<sup>1-3</sup>

|                     |                             |                        |                   |          |
|---------------------|-----------------------------|------------------------|-------------------|----------|
| Internally Flawless | Very Very Slightly Included | Very Slightly Included | Slightly Included | Included |
|---------------------|-----------------------------|------------------------|-------------------|----------|

## LABORATORY GROWN DIAMOND REPORT



|                         |   |
|-------------------------|---|
| February 25, 2025       |   |
| IGI Report Number       | LG685566130                                       |
| Description             | LABORATORY GROWN DIAMOND                          |
| Shape and Cutting Style | CUT CORNERED<br>RECTANGULAR MODIFIED<br>BRILLIANT |
| Measurements            | 8.11 X 5.71 X 3.87 MM                             |
| <b>GRADING RESULTS</b>  |   |
| Carat Weight            | 1.57 CARAT  |
| Color Grade             | E   |
| Clarity Grade           | VVS 2   |



### ADDITIONAL GRADING INFORMATION

|  |   |
|--|---|
| Polish   | EXCELLENT   |
| Symmetry   | EXCELLENT   |
| Fluorescence   | NONE  |
| Inscription(s)   |  LG685566130 |
| Comments: This Laboratory Grown Diamond was created by Chemical Vapor Deposition (CVD) growth process. |   |
| Type IIa   |   |



IG



© IGI 2020, International Gemological Institute

FD - 10 20



THIS DOCUMENT WAS PRODUCED WITH THE FOLLOWING SECURITY MEASURES: SPECIAL DOCUMENT PAPER, INK SCREENS, WATERMARK, BACKGROUND DESIGNS, HOLOGRAM AND OTHER SECURITY FEATURES NOT LISTED AND DO EXCEED DOCUMENT SECURITY INDUSTRY GUIDELINES

**www.igi.org**

|                       |                           |                                       |
|-----------------------|---------------------------|---------------------------------------|
| February 25, 2025     | GI Report No. LG456566130 | OUT CORNERED RECT. MODIFIED BRILLIANT |
| 1.11 X 6.71 X 3.87 MM | Carat Weight              | 1.57 CARAT                            |
| Color Grade           | E                         |                                       |
| Clarity Grade         | VVS 2                     |                                       |
| Depth                 | 67.5%                     |                                       |
| Table                 | 64%                       |                                       |
| Grainle               | Medium                    |                                       |
| Culet                 | Pointed                   |                                       |
| Polish                | EXCELLENT                 |                                       |
| Symmetry              | EXCELLENT                 |                                       |
| Fluorescence          | NONE                      |                                       |
| Inscription(s)        | 100 LG456566130           |                                       |

Comments:  
 This Laboratory Grown Diamond was  
 created by Chemical Vapor Deposition  
 (CVD) growth process.  
 Type IIa