



**ELECTRONIC COPY**

LG685562813  
Report verification at igi.org



March 1, 2025

IGI Report Number **LG685562813**

Description **LABORATORY GROWN DIAMOND**

Shape and Cutting Style **BAGUETTE**

Measurements **10.15 X 5.26 X 3.33 MM**

**GRADING RESULTS**

Carat Weight **2.01 CARATS**

Color Grade **D**

Clarity Grade **VVS 1**

March 1, 2025  
IGI Report Number **LG685562813**  
Description **LABORATORY GROWN DIAMOND**  
Shape and Cutting Style **BAGUETTE**  
Measurements **10.15 X 5.26 X 3.33 MM**

**GRADING RESULTS**

Carat Weight **2.01 CARATS**

Color Grade **D**

Clarity Grade **VVS 1**

**ADDITIONAL GRADING INFORMATION**

Polish **EXCELLENT**

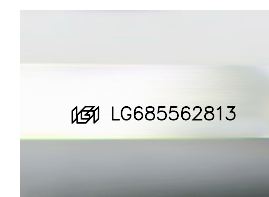
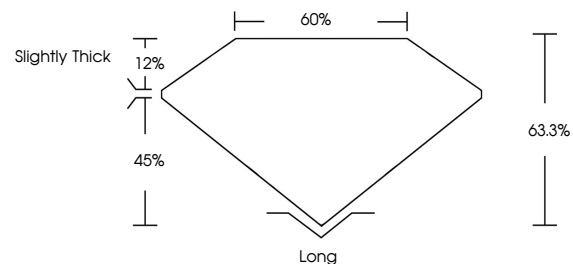
Symmetry **EXCELLENT**

Fluorescence **NONE**

Inscription(s) **LG685562813**

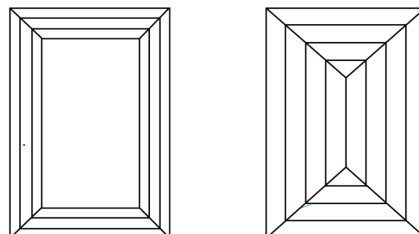
Comments: This Laboratory Grown Diamond was created by Chemical Vapor Deposition (CVD) growth process. Type IIa

**PROPORTIONS**



Sample Image Used

**CLARITY CHARACTERISTICS**



**KEY TO SYMBOLS**

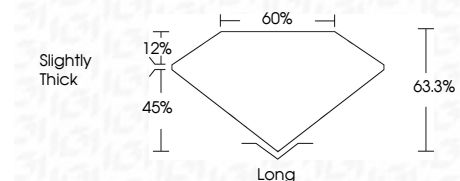
Red symbols indicate internal characteristics.  
Green symbols indicate external characteristics.

**COLOR**

D E F G H I J Faint Very Light Light

**CLARITY**

IF	VS <sup>1-2</sup>	VS <sup>1-2</sup>	SI <sup>1-2</sup>	I <sup>1-3</sup>
Internally Flawless	Very Very Slightly Included	Very Slightly Included	Slightly Included	Included



**ADDITIONAL GRADING INFORMATION**

Polish **EXCELLENT**

Symmetry **EXCELLENT**

Fluorescence **NONE**

Inscription(s) **LG685562813**

Comments: This Laboratory Grown Diamond was created by Chemical Vapor Deposition (CVD) growth process. Type IIa



**IGI**



March 1, 2025  
IGI Report No. **LG685562813**  
**BAGUETTE**  
**2.01 CARATS**  
Carat Weight **D**  
Color Grade **VVS 1**  
Clarity Grade **63.3%**  
Depth **45%**  
Table **Slightly Thick**  
Girdle  
Culet  
Long  
Polish **EXCELLENT**  
Symmetry **EXCELLENT**  
Fluorescence **NONE**  
Inscription(s) **LG685562813**  
Comments: This Laboratory Grown Diamond was created by Chemical Vapor Deposition (CVD) growth process. Type IIa