

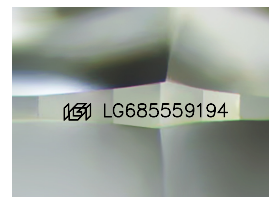
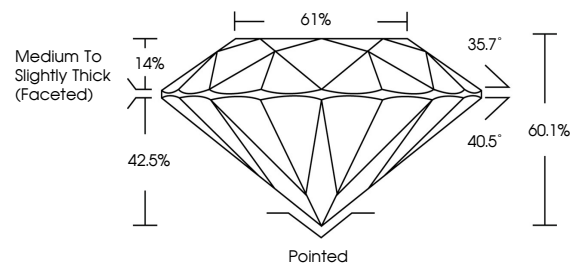


ELECTRONIC COPY

LABORATORY GROWN DIAMOND REPORT

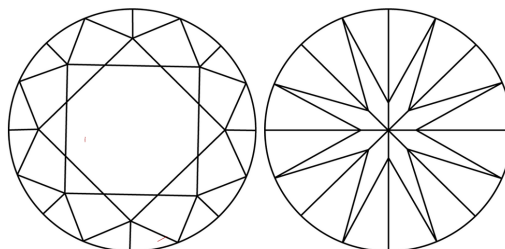
LG685559194
Report verification at igi.org

PROPORTIONS



Sample Image Used

CLARITY CHARACTERISTICS



KEY TO SYMBOLS

Red symbols indicate internal characteristics.
Green symbols indicate external characteristics.

COLOR

D E F G H I J Faint Very Light Light

CLARITY

IF WS¹⁻² VS¹⁻² S¹⁻² |¹⁻³

Internally Flawless	Very Very Slightly Included	Very Slightly Included	Slightly Included	Included
------------------------	--------------------------------	---------------------------	----------------------	----------



© IGI 2020, International Gemological Institute

FD - 10 20

www.igi.org

LABORATORY GROWN DIAMOND REPORT



February 25, 2025

IGI Report Number **LG685559194**

Description	LABORATORY GROWN DIAMOND
-------------	--------------------------

Shape and Cutting Style **ROUND BRILLIANT**

Measurements	6.56 - 6.59 X 3.96 MM
--------------	-----------------------

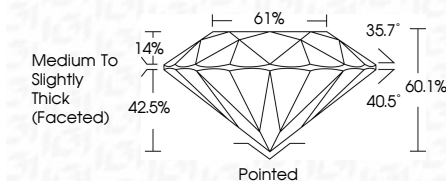
GRADING RESULTS

Carat Weight **1.07 CARAT**

Color Grade	D
-------------	---

Clarity Grade VS 1

Cut Grade **EXCELLENT**



ADDITIONAL GRADING INFORMATION

Polish **VERY GOOD**Symmetry **EXCELLENT**Fluorescence NONEInscription(s) LG685559194

Comments: As Grown - No indication of post-growth treatment.

This Laboratory Grown Diamond was created by High Pressure High Temperature (HPHT) growth process.
Type II



IG

February 25, 2025	IGI Report No LG4855914	ROUND BELLANT
6.66 - 6.69 X 3.96 MM		
Carat Weight	1.07 CARAT	
Color Grade	D	
Clarity Grade	VS 1	
Cut Grade	EXCELLENT	
Depth	61.1%	
Table	61%	
Girdle	Medium to slightly Thick Faceted	
Culet	Pointed	
Polish	VERY GOOD	
Symmetry	EXCELLENT	
Fluorescence	NONE	
Inscriptions(s)	689 LG4855914	
Comments:	<p>As Grown - No indication of post-growth treatment.</p> <p>This Laboratory Grown Diamond was created by High Pressure High Temperature (HPHT) growth process.</p> <p>Type II</p>	