



**INTERNATIONAL
GEMOLOGICAL
INSTITUTE**

LABORATORY GROWN DIAMOND REPORT

March 4, 2025
 IGI Report Number **LG685545972**
 Description **LABORATORY GROWN DIAMOND**
 Shape and Cutting Style **ROUND BRILLIANT**
 Measurements **5.33 - 5.37 X 3.29 MM**

GRADING RESULTS

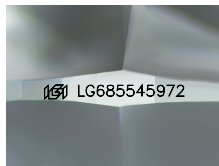
Carat Weight **0.57 CARAT**
 Color Grade **FANCY VIVID PINK**
 Clarity Grade **VVS 2**
 Cut Grade **IDEAL**

ADDITIONAL GRADING INFORMATION

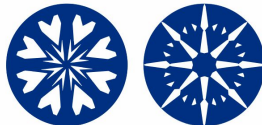
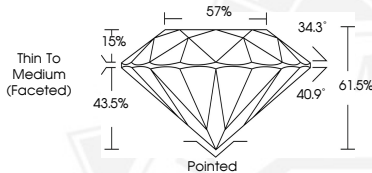
Polish **EXCELLENT**
 Symmetry **EXCELLENT**
 Fluorescence **SLIGHT**
 Inscription(s) **IGI LG685545972**

Comments: HEARTS & ARROWS
 This Laboratory Grown Diamond was created by Chemical Vapor
 Deposition (CVD) growth process.
 Indications of post-growth treatment.

ELECTRONIC COPY



Sample Image Used



HEARTS & ARROWS



March 4, 2025
IGI Report Number LG685545972
ROUND BRILLIANT
LABORATORY GROWN DIAMOND
5.33 - 5.37 X 3.29 MM
 Carat Weight **0.57 CARAT**
 Color Grade **FANCY VIVID PINK**
 Clarity Grade **VVS 2**
 Cut Grade **IDEAL**
 Polish **EXCELLENT**
 Symmetry **EXCELLENT**
 Fluorescence **SLIGHT**
 Inscription(s) **IGI LG685545972**
 Comments: HEARTS & ARROWS This
 Laboratory Grown Diamond was
 created by Chemical Vapor
 Deposition (CVD) growth process.
 Indications of post-growth
 treatment.



March 4, 2025
IGI Report Number LG685545972
ROUND BRILLIANT
LABORATORY GROWN DIAMOND
5.33 - 5.37 X 3.29 MM
 Carat Weight **0.57 CARAT**
 Color Grade **FANCY VIVID PINK**
 Clarity Grade **VVS 2**
 Cut Grade **IDEAL**
 Polish **EXCELLENT**
 Symmetry **EXCELLENT**
 Fluorescence **SLIGHT**
 Inscription(s) **IGI LG685545972**
 Comments: HEARTS & ARROWS This
 Laboratory Grown Diamond was
 created by Chemical Vapor
 Deposition (CVD) growth process.
 Indications of post-growth
 treatment.

THIS DOCUMENT WAS PRODUCED WITH THE FOLLOWING SECURITY MEASURES: SPECIAL DOCUMENT PAPER, INK SCREENS, WATERMARK, BACKGROUND DESIGN, HOLOGRAM AND OTHER SECURITY FEATURES NOT LISTED AND DO EXCEED DOCUMENT SECURITY INDUSTRY GUIDELINES.

For terms & conditions and to verify this report, please visit www.igi.org