



# INTERNATIONAL GEMOLOGICAL INSTITUTE

## LABORATORY GROWN DIAMOND REPORT

February 21, 2025

IGI Report Number

LG685544188

Description

LABORATORY GROWN DIAMOND

Shape and Cutting Style

ROUND BRILLIANT

Measurements

5.38 - 5.41 X 3.36 MM

### GRADING RESULTS

Carat Weight

0.59 CARAT

Color Grade

D

Clarity Grade

VVS 2

Cut Grade

IDEAL

### ADDITIONAL GRADING INFORMATION

Polish

EXCELLENT

Symmetry

EXCELLENT

Fluorescence

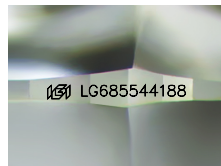
NONE

Inscription(s)

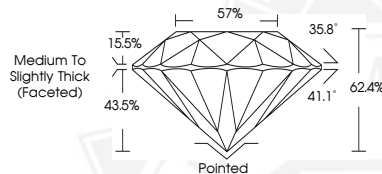
IGI LG685544188

Comments: This Laboratory Grown Diamond was created by Chemical Vapor Deposition (CVD) growth process. Type IIa

ELECTRONIC COPY



Sample Image Used



February 21, 2025

IGI Report Number LG685544188

ROUND BRILLIANT

LABORATORY GROWN DIAMOND

5.38 - 5.41 X 3.36 MM

Carat Weight 0.59 CARAT

Color Grade D

Clarity Grade VVS 2

Cut Grade IDEAL

Polish EXCELLENT

Symmetry EXCELLENT

Fluorescence NONE

Inscription(s) IGI LG685544188

Comments: This Laboratory Grown Diamond was created by Chemical Vapor Deposition (CVD) growth process. Type IIa



February 21, 2025

IGI Report Number LG685544188

ROUND BRILLIANT

LABORATORY GROWN DIAMOND

5.38 - 5.41 X 3.36 MM

Carat Weight 0.59 CARAT

Color Grade D

Clarity Grade VVS 2

Cut Grade IDEAL

Polish EXCELLENT

Symmetry EXCELLENT

Fluorescence NONE

Inscription(s) IGI LG685544188

Comments: This Laboratory Grown Diamond was created by Chemical Vapor Deposition (CVD) growth process. Type IIa



THIS DOCUMENT WAS PRODUCED WITH THE FOLLOWING SECURITY MEASURES: SPECIAL DOCUMENT PAPER, INK SCREENS, WATERMARK, BACKGROUND DESIGN, HOLOGRAM AND OTHER SECURITY FEATURES NOT LISTED AND DO EXCEED DOCUMENT SECURITY INDUSTRY GUIDELINES.

For terms & conditions and to verify this report, please visit [www.igi.org](http://www.igi.org)