



ELECTRONIC COPY

LG685542651
Report verification at igi.org



February 24, 2025

IGI Report Number **LG685542651**

Description **LABORATORY GROWN DIAMOND**

Shape and Cutting Style **ROUND BRILLIANT**

Measurements **6.61 - 6.64 X 4.08 MM**

GRADING RESULTS

Carat Weight **1.09 CARAT**

Color Grade **D**

Clarity Grade **VVS 2**

Cut Grade **IDEAL**

February 24, 2025
IGI Report Number **LG685542651**
Description **LABORATORY GROWN DIAMOND**
Shape and Cutting Style **ROUND BRILLIANT**
Measurements **6.61 - 6.64 X 4.08 MM**

GRADING RESULTS

Carat Weight **1.09 CARAT**

Color Grade **D**

Clarity Grade **VVS 2**

Cut Grade **IDEAL**

ADDITIONAL GRADING INFORMATION

Polish **EXCELLENT**

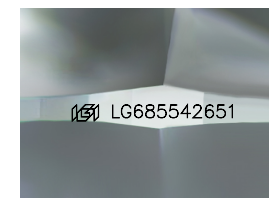
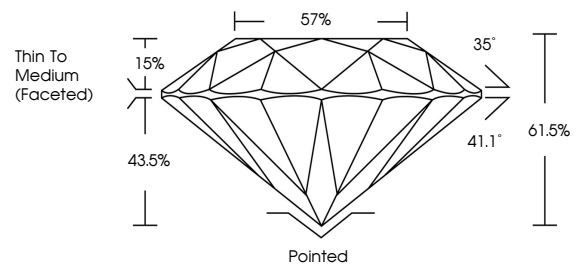
Symmetry **EXCELLENT**

Fluorescence **NONE**

Inscription(s) **IGI LG685542651**

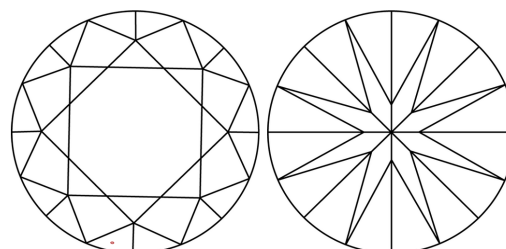
Comments: This Laboratory Grown Diamond was created by Chemical Vapor Deposition (CVD) growth process.
Type IIa

PROPORTIONS



Sample Image Used

CLARITY CHARACTERISTICS



KEY TO SYMBOLS

Red symbols indicate internal characteristics.
Green symbols indicate external characteristics.

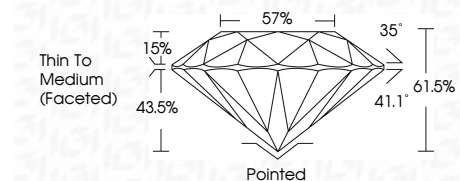
COLOR

D E F G H I J Faint Very Light Light

CLARITY

IF WS¹⁻² VS¹⁻² SI¹⁻² I¹⁻³

Internally Flawless Very Very Slightly Included Very Slightly Included Slightly Included Included



ADDITIONAL GRADING INFORMATION

Polish **EXCELLENT**

Symmetry **EXCELLENT**

Fluorescence **NONE**

Inscription(s) **IGI LG685542651**

Comments: This Laboratory Grown Diamond was created by Chemical Vapor Deposition (CVD) growth process.
Type IIa



IGI



February 24, 2025	IGI Report No LG685542651	1.09 CARAT	D	Pointed	EXCELLENT	EXCELLENT	NONE	IGI LG685542651
ROUND BRILLIANT	6.61 - 6.64 X 4.08 MM	Color Grade	VVS 2	Depth	IDEAL	61.5%	57%	Thin To Medium (Faceted)
		Clarity Grade	IDEAL	Cut Grade	EXCELLENT	EXCELLENT	NONE	
		Table		Grille				
		Polish		Symmetry				
		Fluorescence		Inscription(s)				
		Comments: This Laboratory Grown Diamond was created by Chemical Vapor Deposition (CVD) growth process.						
		Type IIa						