



ELECTRONIC COPY

LABORATORY GROWN DIAMOND REPORT

February 24, 2025
IGI Report Number LG685537590
Description LABORATORY GROWN DIAMOND
Shape and Cutting Style CUT CORNERED RECTANGULAR MODIFIED BRILLIANT
Measurements 7.64 X 4.93 X 3.10 MM

GRADING RESULTS

Carat Weight 1.03 CARAT
Color Grade H
Clarity Grade VVS 1

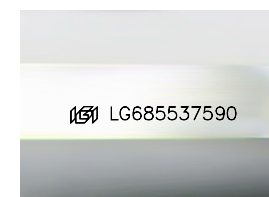
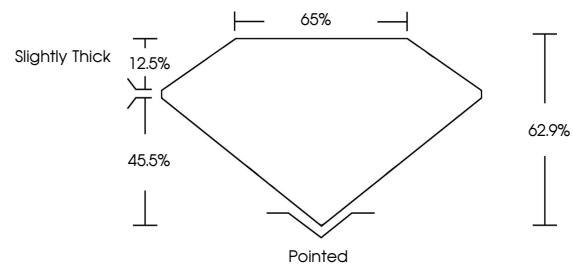
ADDITIONAL GRADING INFORMATION

Polish EXCELLENT
Symmetry EXCELLENT
Fluorescence NONE

Inscription(s) LG685537590

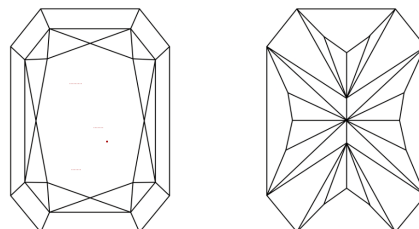
Comments: This Laboratory Grown Diamond was created by Chemical Vapor Deposition (CVD) growth process.
Type IIa

PROPORTIONS



Sample Image Used

CLARITY CHARACTERISTICS



KEY TO SYMBOLS

Red symbols indicate internal characteristics.
Green symbols indicate external characteristics.

COLOR

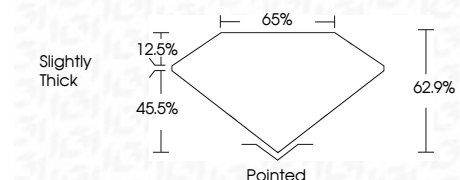
D E F G H I J Faint Very Light Light

CLARITY

IF WS¹⁻² VS¹⁻² SI¹⁻² I¹⁻³
Internally Flawless Very Very Slightly Included Very Slightly Included Slightly Included Included



February 24, 2025
IGI Report Number LG685537590
Description LABORATORY GROWN DIAMOND
Shape and Cutting Style CUT CORNERED RECTANGULAR MODIFIED BRILLIANT
Measurements 7.64 X 4.93 X 3.10 MM
GRADING RESULTS
Carat Weight 1.03 CARAT
Color Grade H
Clarity Grade VVS 1



ADDITIONAL GRADING INFORMATION

Polish EXCELLENT
Symmetry EXCELLENT
Fluorescence NONE
Inscription(s) LG685537590
Comments: This Laboratory Grown Diamond was created by Chemical Vapor Deposition (CVD) growth process.
Type IIa



IGI



February 24, 2025
IGI Report No LG685537590
CUT CORNERED RECT. MODIFIED BRILLIANT
7.64 X 4.93 X 3.10 MM
1.03 CARAT H
Color Grade
Clarity Grade VVS 1
Depth 62.9%
Table 65%
Girdle Slightly Thick
Culet Pointed
Polish EXCELLENT
Symmetry EXCELLENT
Fluorescence NONE
Inscription(s) LG685537590
Comments: This Laboratory Grown Diamond was created by Chemical Vapor Deposition (CVD) growth process.
Type IIa