

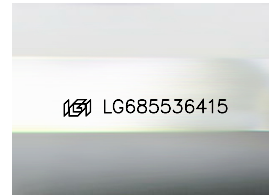
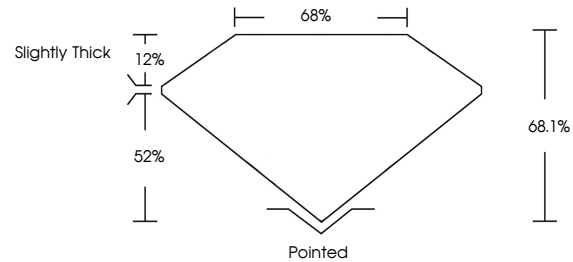


**INTERNATIONAL
GEMOLOGICAL
INSTITUTE**

ELECTRONIC COPY

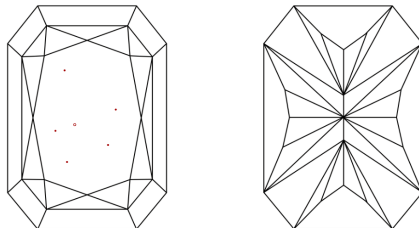
LG685536415
Report verification at igi.org

PROPORTIONS



Sample Image Used

CLARITY CHARACTERISTICS



KEY TO SYMBOLS

Red symbols indicate internal characteristics.
Green symbols indicate external characteristics.

COLOR

D E F G H I J Faint Very Light Light

CLARITY

IF	WS ¹⁻²	VS ¹⁻²	SI ¹⁻²	I ¹⁻³
----	-------------------	-------------------	-------------------	------------------

Internally Flawless	Very Very Slightly Included	Very Slightly Included	Slightly Included	Included
------------------------	--------------------------------	---------------------------	----------------------	----------



February 25, 2025

IGI Report Number **LG685536415**

Description	LABORATORY GROWN DIAMOND
-------------	--------------------------

Shape and Cutting Style

CUT CORNERED
RECTANGULAR MODIFIED
BRILLIANT

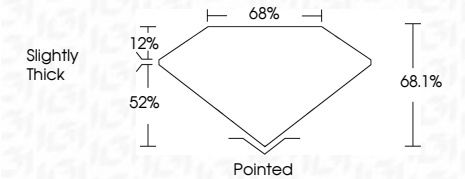
Measurements 12.13 X 8.40 X 5.72 MM

GRADING RESULTS

Carat Weight **5.08 CARATS**

Color Grade	E
-------------	---

Clarity Grade VS 1



ADDITIONAL GRADING INFORMATION

Polish **EXCELLENT**Symmetry **EXCELLENT**Fluorescence **NONE**Inscription(s) LG685536415

Comments: This Laboratory Grown Diamond was created by Chemical Vapor Deposition (CVD) growth process.
Type IIa



IGI



© IGI 2020, International Gemological Institute

FD - 10 20

www.igi.org

THIS DOCUMENT WAS PRODUCED WITH THE FOLLOWING SECURITY MEASURES: SPECIAL DOCUMENT PAPER, INK SCREENS, WATERMARK, BACKGROUND DESIGNS, HOLOGRAM AND OTHER SECURITY FEATURES NOT LISTED AND DO EXCEED DOCUMENT SECURITY INDUSTRY GUIDELINES

February 25, 2025	IGI REPORT NO. LG4553415	CUIT CORNERED RECT. MODIFIED BRILLIANT
12.13 X 8.40 X 5.72 MM	5.08 CARATS	
Carat Weight	Color Grade	E
Clarity Grade		VS 1
Depth		68.1%
Table		66%
Girdle		Slightly Thick
Culet		Pointed
Polish		EXCELLENT
Symmetry		EXCELLENT
Fluorescence		NONE
Inscription(s)		IGI LG4553415
Comments:		
		Very Good Diamond was created by Chemical Vapor Deposition (CVD) growth process.
		Type IIA

This Laboratory Grown Diamond was created by Chemical Vapor Deposition (CVD) growth process.
Type IIa