



**ELECTRONIC COPY**

LG685535358  
Report verification at [igi.org](http://igi.org)



March 6, 2025  
IGI Report Number **LG685535358**

Description **LABORATORY GROWN DIAMOND**

Shape and Cutting Style **MODIFIED EMERALD CUT**

Measurements **14.84 X 10.29 X 6.53 MM**

**GRADING RESULTS**

Carat Weight **9.89 CARATS**

Color Grade **FANCY VIVID YELLOW**

Clarity Grade **VS 2**

March 6, 2025  
IGI Report Number **LG685535358**  
Description **LABORATORY GROWN DIAMOND**  
Shape and Cutting Style **MODIFIED EMERALD CUT**  
Measurements **14.84 X 10.29 X 6.53 MM**

**GRADING RESULTS**

Carat Weight **9.89 CARATS**

Color Grade **FANCY VIVID YELLOW**

Clarity Grade **VS 2**

**ADDITIONAL GRADING INFORMATION**

Polish **EXCELLENT**

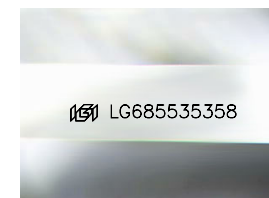
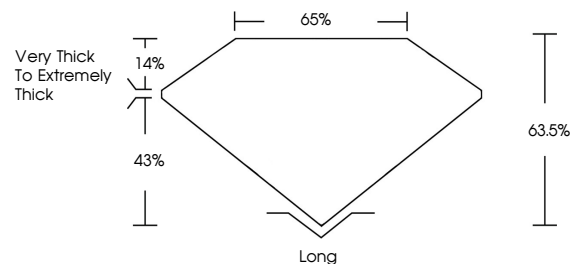
Symmetry **EXCELLENT**

Fluorescence **NONE**

Inscription(s) **LG685535358**

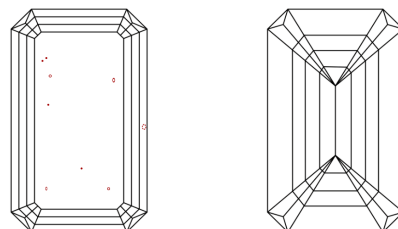
Comments: This Laboratory Grown Diamond was created by Chemical Vapor Deposition (CVD) growth process.

**PROPORTIONS**



Sample Image Used

**CLARITY CHARACTERISTICS**



**KEY TO SYMBOLS**

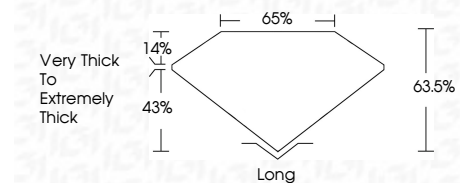
Red symbols indicate internal characteristics.  
Green symbols indicate external characteristics.

**COLOR**

D E F G H I J Faint Very Light Light

**CLARITY**

IF	VS <sup>1-2</sup>	VS <sup>1-2</sup>	SI <sup>1-2</sup>	I <sup>1-3</sup>
Internally Flawless	Very Very Slightly Included	Very Slightly Included	Slightly Included	Included



**ADDITIONAL GRADING INFORMATION**

Polish **EXCELLENT**

Symmetry **EXCELLENT**

Fluorescence **NONE**

Inscription(s) **LG685535358**

Comments: This Laboratory Grown Diamond was created by Chemical Vapor Deposition (CVD) growth process.



**IGI**



March 6, 2025  
IGI Report No. **LG685535358**  
**MODIFIED EMERALD CUT**  
**14.84 X 10.29 X 6.53 MM**  
Carat Weight **9.89 CARATS**  
Color Grade **FANCY VIVID YELLOW**  
Clarity Grade **VS 2**  
Depth **63.5%**  
Table **65%**  
Girdle **Very Thick to Extremely Thick**  
Culet **Long**  
Polish **EXCELLENT**  
Symmetry **EXCELLENT**  
Fluorescence **NONE**  
Inscription(s) **LG685535358**  
Comments: This Laboratory Grown Diamond was created by Chemical Vapor Deposition (CVD) growth process.