



ELECTRONIC COPY

LABORATORY GROWN DIAMOND REPORT

March 25, 2025	
IGI Report Number	LG685521945
Description	LABORATORY GROWN DIAMOND
Shape and Cutting Style	PRINCESS CUT
Measurements	8.36 X 8.34 X 5.89 MM

GRADING RESULTS

Carat Weight	3.52 CARATS
Color Grade	D
Clarity Grade	VVS 2

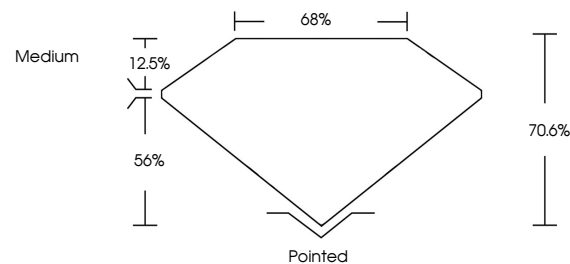
ADDITIONAL GRADING INFORMATION

Polish	EXCELLENT
Symmetry	EXCELLENT
Fluorescence	NONE
Inscription(s)	 LG685521945

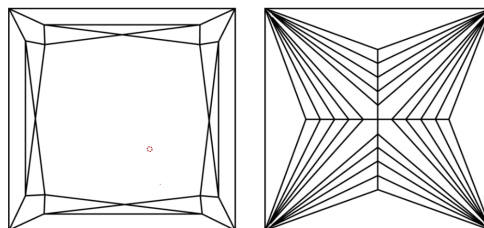
Comments: This Laboratory Grown Diamond was created by Chemical Vapor Deposition (CVD) growth process.
Type IIa

LG685521945
Report verification at igi.org

PROPORTIONS

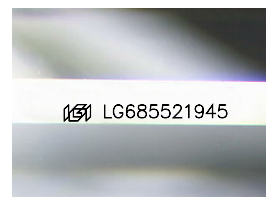


CLARITY CHARACTERISTICS



KEY TO SYMBOLS

Red symbols indicate internal characteristics.
Green symbols indicate external characteristics.



Sample Image Used

COLOR

D E F G H I J Faint Very Light Light

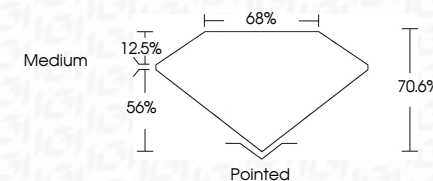
CLARITY

IF	VS ¹⁻²	VS ¹⁻²	SI ¹⁻²	I ¹⁻³
Internally Flawless	Very Very Slightly Included	Very Slightly Included	Slightly Included	Included


LABORATORY GROWN DIAMOND REPORT



March 25, 2025	
IGI Report Number	LG685521945
Description	LABORATORY GROWN DIAMOND
Shape and Cutting Style	PRINCESS CUT
Measurements	8.36 X 8.34 X 5.89 MM
GRADING RESULTS	
Carat Weight	3.52 CARATS
Color Grade	D
Clarity Grade	VVS 2



ADDITIONAL GRADING INFORMATION

Polish	EXCELLENT
Symmetry	EXCELLENT
Fluorescence	NONE
Inscription(s)	 LG68521945
<p>Comments: This Laboratory Grown Diamond was created by Chemical Vapor Deposition (CVD) growth process.</p> <p>Type IIa</p>	



www.igi.org

© IGI 2020, International Gemological Institute

FD - 10 20



THIS DOCUMENT WAS PRODUCED WITH THE FOLLOWING SECURITY MEASURES: SPECIAL DOCUMENT PAPER, INK SCREENS, WATERMARK, BACKGROUND DESIGNS, HOLOGRAM AND OTHER SECURITY FEATURES NOT LISTED AND DO EXCEED DOCUMENT SECURITY INDUSTRY GUIDELINE

March 25, 2025	GI Report No LG465521945	3.92 CARATS	D	VVS 2	70.6%	65%	Medium	Pointed	EXCELLENT	EXCELLENT	NONE	\$\$\$ LG465521945
	3.92 X 3.34 X 5.99 MM	Color Grade	Clarity Grade	Depth	Table	Girdle		Culet	Polish	Symmetry	Fluorescence	Inscriptions(s)
	Carat Weight											

Comments: Very Fine Green Diamond was created by Chemical Vapor Deposition (CVD) growth process.

Type IIa

Comments:
This Laboratory Grown Diamond was created by Chemical Vapor Deposition (CVD) growth process.