



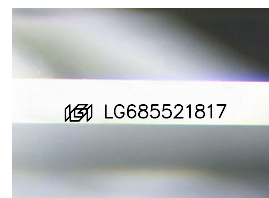
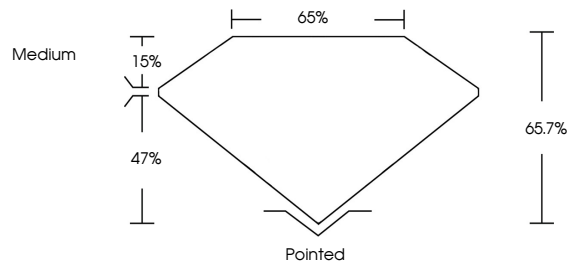
**INTERNATIONAL  
GEMOLOGICAL  
INSTITUTE**

**ELECTRONIC COPY**

## LABORATORY GROWN DIAMOND REPORT

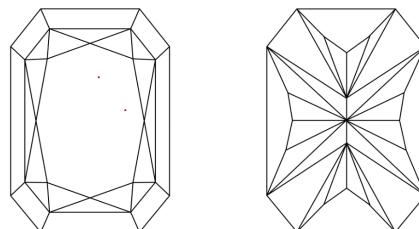
LG685521817  
Report verification at [igi.org](https://www.igi.org)

## PROPORTIONS



Sample Image Used

## CLARITY CHARACTERISTICS



## KEY TO SYMBOLS

Red symbols indicate internal characteristics.  
Green symbols indicate external characteristics.

**COLOR**

D E F G H I J Faint Very Light Light

## CLARITY

IF      WS<sup>1-2</sup>      VS<sup>1-2</sup>      SI<sup>1-2</sup>      I<sup>1-3</sup>

|                        |                                |                           |                      |          |
|------------------------|--------------------------------|---------------------------|----------------------|----------|
| Internally<br>Flawless | Very Very<br>Slightly Included | Very<br>Slightly Included | Slightly<br>Included | Included |
|------------------------|--------------------------------|---------------------------|----------------------|----------|



© IGI 2020, International Gemological Institute

FD - 10 20

**www.igi.org**

LABORATORY GROWN DIAMOND REPORT



April 15, 2025

IGI Report Number **LG685521817**

|             |                          |
|-------------|--------------------------|
| Description | LABORATORY GROWN DIAMOND |
|-------------|--------------------------|

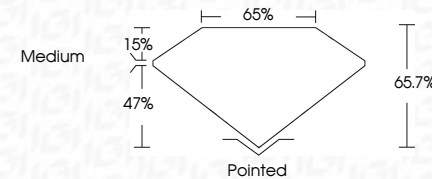
Shape and Cutting Style

Measurements 10.83 X 7.62 X 5.01 MM

## GRADING RESULTS

Carat Weight **3.58 CARATS**

|             |   |
|-------------|---|
| Color Grade | E |
|-------------|---|

Clarity Grade **VVS 1**

### ADDITIONAL GRADING INFORMATION

Polish **EXCELLENT**Symmetry **EXCELLENT**Fluorescence **NONE**Inscription(s)  LG685521817

Comments: This Laboratory Grown Diamond was created by Chemical Vapor Deposition (CVD) growth process.  
Type IIa



IG

|  |                               |  |
|--|-------------------------------|--|
| <b>April 19, 2025</b>  | <b>GI Report No LG6852187</b> | <b>CUT CORNERED RECT. MODIFIED BRILLIANT</b> |
| <b>10.83 X 7.02 X 6.01 MM</b>  | <b>3.56 CARATS</b>            | <b>E</b>                                     |
| <b>Color Weight</b>  | <b>VWS 1</b>                  | <b>Painted</b>                               |
| <b>Carat Grade</b>   | <b>65.7%</b>                  | <b>EXCELLENT</b>                             |
| <b>Clarity</b>   | <b>Depth</b>                  | <b>EXCELLENT</b>                             |
| <b>Table</b>   | <b>65%</b>                    | <b>NONE</b>                                  |
| <b>Girdle</b>  | <b>Medium</b>                 | <b>#6# LG6852187</b>                         |
| <b>Culet</b>   |                               |  |
| <b>Polish</b>  |                               |  |
| <b>Symmetry</b>  |                               |  |
| <b>Fluorescence</b>  |                               |  |
| <b>Inscription(s)</b>  |                               |  |
| <b>Comments:</b>   |                               |  |
| This Laboratory Grown Diamond was created by Chemical Vapor Deposition (CVD) growth process. |                               |  |
| <b>Type IIA</b>  |                               |  |

**Comments:**  
This Laboratory Grown Diamond was  
created by Chemical Vapor Deposition  
(CVD) growth process.