



ELECTRONIC COPY

LABORATORY GROWN DIAMOND REPORT

March 12, 2025	
IGI Report Number	LG685513848
Description	LABORATORY GROWN DIAMOND
Shape and Cutting Style	ROUND BRILLIANT
Measurements	9.34 - 9.38 X 5.57 MM

GRADING RESULTS

Carat Weight	3.01 CARATS
Color Grade	D
Clarity Grade	VVS 1
Cut Grade	IDEAL

ADDITIONAL GRADING INFORMATION

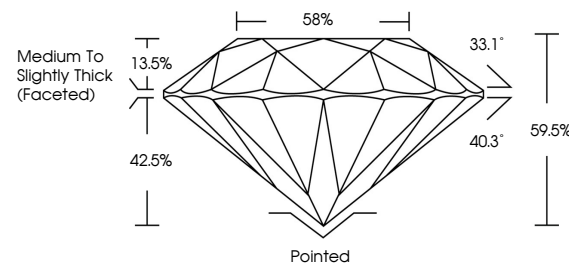
Polish	EXCELLENT
Symmetry	EXCELLENT
Fluorescence	NONE
Inscription(s)	 LG685513848

Comments: As Grown - No indication of post-growth treatment.

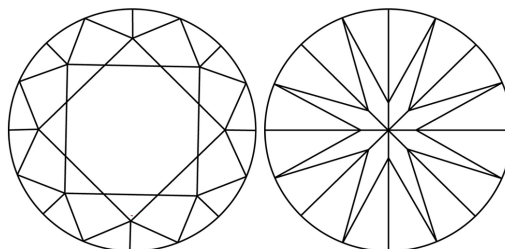
This Laboratory Grown Diamond was created by High Pressure High Temperature (HPHT) growth process.
Type II

LG685513848
Report verification at igi.org

PROPORTIONS

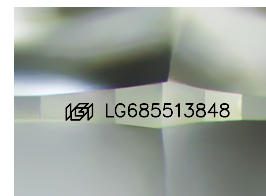


CLARITY CHARACTERISTICS



KEY TO SYMBOLS

Red symbols indicate internal characteristics.
Green symbols indicate external characteristics.



Sample Image Used

COLOR

D E F G H I J Faint Very Light Light

CLARITY

IF VWS¹⁻² VS¹⁻² SI¹⁻² | 1-2

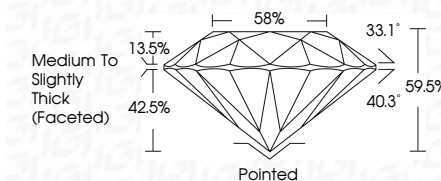
Internally Flawless	Very Very Slightly Included	Very Slightly Included	Slightly Included	Included
------------------------	--------------------------------	---------------------------	----------------------	----------



March 12, 2025	
IGI Report Number	LG685513848
Description	LABORATORY GROWN DIAMOND
Shape and Cutting Style	ROUND BRILLIANT
Measurements	9.34 - 9.38 X 5.57 MM

GRADING RESULTS

Carat Weight	3.01 CARATS
Color Grade	D
Clarity Grade	VVS 1
Cut Grade	IDEAL



ADDITIONAL GRADING INFORMATION

Polish	EXCELLENT
Symmetry	EXCELLENT
Fluorescence	NONE
Inscription(s)	 LG685513848

Comments: As Grown - No indication of post-growth treatment.

This Laboratory Grown Diamond was created by High Pressure High Temperature (HPHT) growth process.
Type II



© IGI 2020, International Gemological Institute

FD - 10 20

www.igi.org



THIS DOCUMENT WAS PRODUCED WITH THE FOLLOWING SECURITY MEASURES: SPECIAL DOCUMENT PAPER, INK SCREENS, WATERMARK, BACKGROUND DESIGNS, HOLOGRAM AND OTHER SECURITY FEATURES NOT LISTED AND DO EXCEED DOCUMENT SECURITY INDUSTRY GUIDELINES

	March 12, 2026	
(G) Report No LG458519-48		
ROUND BRILLIANT		
GIA # - G38-X 3.57 MM		
Carat Weight	Color Grade	D
Clarity Grade	VVS 1	3.01 CARATS
Cut Grade	IDEAL	
Depth	59.5%	
Table	58%	
Girdle	Medium To Slightly Thick Faceted	
Culet	Poined	
Polish	EXCELLENT	
Symmetry	EXCELLENT	
Fluorescence	NONE	
Inscription(s)	L65858519-48	
Comments:		
As Grown - No indication of post-growth treatment.		
The Laboratory Grown Diamond was created by High Pressure High Temperature (HPHT) growth process.		
Type IIb		