



**ELECTRONIC COPY**

LG685512675  
Report verification at igi.org



March 20, 2025  
IGI Report Number **LG685512675**  
Description **LABORATORY GROWN DIAMOND**  
Shape and Cutting Style **PRINCESS CUT**  
Measurements **9.10 X 9.03 X 6.21 MM**  
**GRADING RESULTS**  
Carat Weight **4.55 CARATS**  
Color Grade **F**  
Clarity Grade **VVS 2**

March 20, 2025  
IGI Report Number **LG685512675**  
Description **LABORATORY GROWN DIAMOND**  
Shape and Cutting Style **PRINCESS CUT**  
Measurements **9.10 X 9.03 X 6.21 MM**

**GRADING RESULTS**

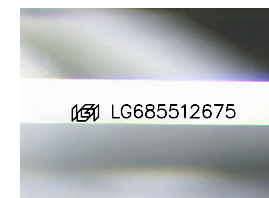
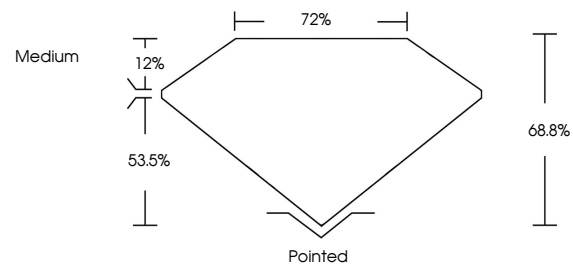
Carat Weight **4.55 CARATS**  
Color Grade **F**  
Clarity Grade **VVS 2**

**ADDITIONAL GRADING INFORMATION**

Polish **EXCELLENT**  
Symmetry **EXCELLENT**  
Fluorescence **NONE**  
Inscription(s) **IGI LG685512675**

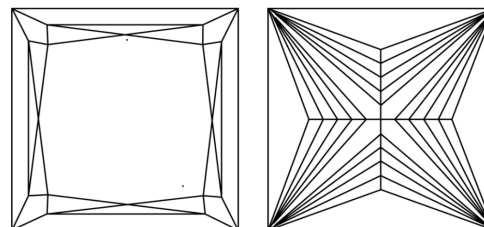
Comments: This Laboratory Grown Diamond was created by Chemical Vapor Deposition (CVD) growth process.  
Type IIa

**PROPORTIONS**



Sample Image Used

**CLARITY CHARACTERISTICS**



**KEY TO SYMBOLS**

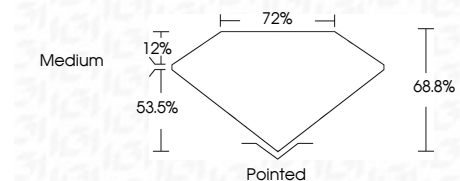
Red symbols indicate internal characteristics.  
Green symbols indicate external characteristics.

**COLOR**

D E F G H I J Faint Very Light Light

**CLARITY**

IF	VS <sup>1-2</sup>	VS <sup>1-2</sup>	SI <sup>1-2</sup>	I <sup>1-3</sup>
Internally Flawless	Very Very Slightly Included	Very Slightly Included	Slightly Included	Included



**ADDITIONAL GRADING INFORMATION**

Polish **EXCELLENT**  
Symmetry **EXCELLENT**  
Fluorescence **NONE**  
Inscription(s) **IGI LG685512675**  
Comments: This Laboratory Grown Diamond was created by Chemical Vapor Deposition (CVD) growth process.  
Type IIa



**IGI**



March 20, 2025  
IGI Report No. LG685512675  
**PRINCESS CUT**  
9.10 X 9.03 X 6.21 MM  
4.55 CARATS  
F  
VVS 2  
4.55 CARATS  
F  
VVS 2  
68.8%  
72%  
Medium  
Pointed  
EXCELLENT  
EXCELLENT  
NONE  
IGI LG685512675  
Comments: This Laboratory Grown Diamond was created by Chemical Vapor Deposition (CVD) growth process.  
Type IIa