

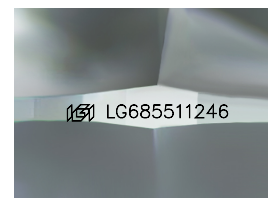
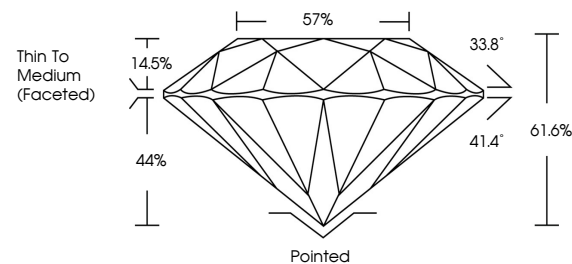


**ELECTRONIC COPY**

## LABORATORY GROWN DIAMOND REPORT

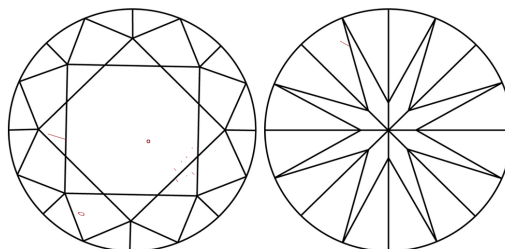
LG685511246  
Report verification at [igi.org](http://igi.org)

## PROPORTIONS



Sample Image Used

## CLARITY CHARACTERISTICS



### KEY TO SYMBOLS

Red symbols indicate internal characteristics.  
Green symbols indicate external characteristics.

**COLOR**

D E F G H I J Faint Very Light Light

## CLARITY

IF WS<sup>1-2</sup> VS<sup>1-2</sup> SI<sup>1-2</sup> |<sup>1-3</sup>

Internally Flawless	Very Very Slightly Included	Very Slightly Included	Slightly Included	Included
------------------------	--------------------------------	---------------------------	----------------------	----------

## LABORATORY GROWN DIAMOND REPORT



March 6, 2025

IGI Report Number **LG685511246**

Description **LABORATORY GROWN DIAMOND**Shape and Cutting Style **ROUND BRILLIANT**

Measurements 7.04 - 7.07 X 4.34 MM

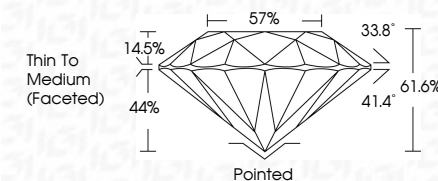
## GRADING RESULTS

Carat Weight **1.31 CARAT**

Color Grade D

Clarity Grade VS 1

Cut Grade **IDEAL**



### ADDITIONAL GRADING INFORMATION

Polish **EXCELLENT**Symmetry **EXCELLENT**Fluorescence **NONE**Inscription(s)  LG685511246

Comments: As Grown - No indication of post-growth treatment.

This Laboratory Grown Diamond was created by High Pressure High Temperature (HPHT) growth process.



© IGI 2020, International Gemological Institute

FD - 10 20



THIS DOCUMENT WAS PRODUCED WITH THE FOLLOWING SECURITY MEASURES: SPECIAL DOCUMENT PAPER, INK SCREENS, WATERMARK, BACKGROUND DESIGNS, HOLOGRAM AND OTHER SECURITY FEATURES NOT LISTED AND DO EXCEED DOCUMENT SECURITY INDUSTRY GUIDELINES

**www.igi.org**

<b>March 6, 2025</b>	<b>(G) Report No LG8855 1246</b>	
<b>ROUND BRILLIANT</b>	<b>1.04 - 1.07 x 4.34 MM</b>	<b>1.31 CARAT D</b>
<b>Color Weight</b>	<b>Color Grade</b>	<b>Vs 1 IDEAL 61.6% 57%</b>
<b>Depth</b>	<b>Clarity Grade</b>	<b>Thin To Medium (faced)</b>
<b>Table</b>	<b>Gut Grade</b>	<b>Patched EXCELLENT EXCELLENT</b>
<b>Grille</b>	<b>Symmetry</b>	<b>NONE NONE</b>
	<b>Fluorescence</b>	<b>#89LG8855 1246</b>
<b>Cueff</b>	<b>Comments:</b>	
<b>Polish</b>	<b>As Grown: No indication of post-growth treatment.</b>	
<b>Symmetry</b>	<b>This Laboratory Grown Diamond was created by High Pressure High Temperature (HPHT) growth process.</b>	
<b>Fluorescence</b>	<b>Type IIa</b>	