



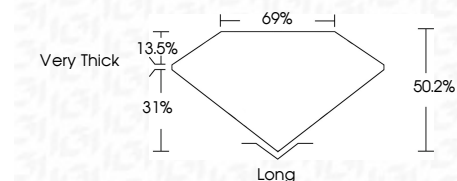
**ELECTRONIC COPY**

LG685506667  
Report verification at igi.org



February 25, 2025  
IGI Report Number **LG685506667**  
Description **LABORATORY GROWN DIAMOND**  
Shape and Cutting Style **TAPERED BAGUETTE**  
Measurements **12.50 X 8.55 X 4.29 MM**

**GRADING RESULTS**  
Carat Weight **4.86 CARATS**  
Color Grade **H**  
Clarity Grade **VS 1**



**ADDITIONAL GRADING INFORMATION**  
Polish **EXCELLENT**  
Symmetry **EXCELLENT**  
Fluorescence **NONE**  
Inscription(s) **IGI LG685506667**  
Comments: This Laboratory Grown Diamond was created by Chemical Vapor Deposition (CVD) growth process. Type IIa



February 25, 2025  
IGI Report No LG685506667  
**TAPERED BAGUETTE**  
12.50 X 8.55 X 4.29 MM  
4.86 CARATS  
H  
VS 1  
60.2%  
69%  
Very Thick  
Long  
EXCELLENT  
EXCELLENT  
NONE  
IGI LG685506667  
Comments: This Laboratory Grown Diamond was created by Chemical Vapor Deposition (CVD) growth process. Type IIa

**LABORATORY GROWN DIAMOND REPORT**

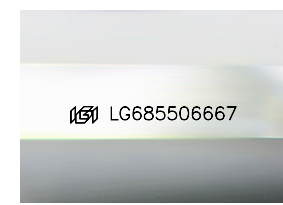
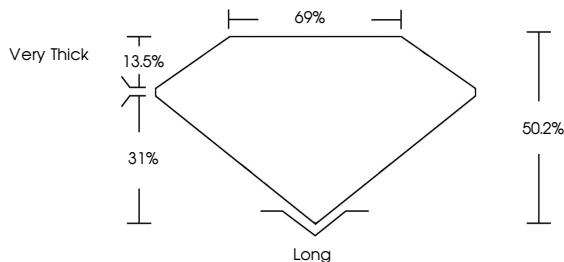
February 25, 2025  
IGI Report Number **LG685506667**  
Description **LABORATORY GROWN DIAMOND**  
Shape and Cutting Style **TAPERED BAGUETTE**  
Measurements **12.50 X 8.55 X 4.29 MM**

**GRADING RESULTS**  
Carat Weight **4.86 CARATS**  
Color Grade **H**  
Clarity Grade **VS 1**

**ADDITIONAL GRADING INFORMATION**  
Polish **EXCELLENT**  
Symmetry **EXCELLENT**  
Fluorescence **NONE**  
Inscription(s) **IGI LG685506667**

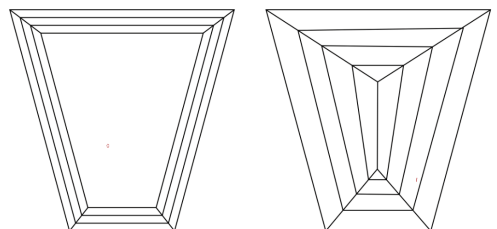
Comments: This Laboratory Grown Diamond was created by Chemical Vapor Deposition (CVD) growth process. Type IIa

**PROPORTIONS**



Sample Image Used

**CLARITY CHARACTERISTICS**



**KEY TO SYMBOLS**  
Red symbols indicate internal characteristics.  
Green symbols indicate external characteristics.

**COLOR**

D	E	F	G	H	I	J	Faint	Very Light	Light
---	---	---	---	---	---	---	-------	------------	-------

**CLARITY**

IF	WS <sup>1-2</sup>	VS <sup>1-2</sup>	SI <sup>1-2</sup>	I <sup>1-3</sup>
Internally Flawless	Very Very Slightly Included	Very Slightly Included	Slightly Included	Included

