



ELECTRONIC COPY

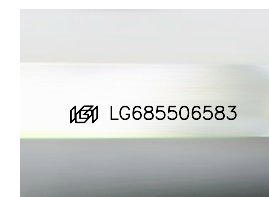
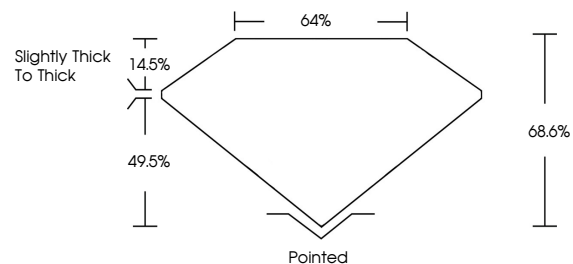
LG685506583
Report verification at igi.org



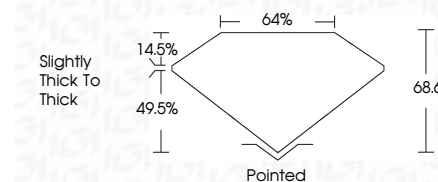
October 10, 2025
IGI Report Number **LG685506583**
Description **LABORATORY GROWN DIAMOND**
Shape and Cutting Style **SQUARE EMERALD CUT**
Measurements **5.71 X 5.58 X 3.83 MM**
GRADING RESULTS
Carat Weight **1.09 CARAT**
Color Grade **FANCY INTENSE PINK**
Clarity Grade **VS 1**
Cut Grade **VERY GOOD**

October 10, 2025
IGI Report Number **LG685506583**
Description **LABORATORY GROWN DIAMOND**
Shape and Cutting Style **SQUARE EMERALD CUT**
Measurements **5.71 X 5.58 X 3.83 MM**
GRADING RESULTS
Carat Weight **1.09 CARAT**
Color Grade **FANCY INTENSE PINK**
Clarity Grade **VS 1**
Cut Grade **VERY GOOD**

PROPORTIONS



Sample Image Used



ADDITIONAL GRADING INFORMATION

Polish **EXCELLENT**
Symmetry **EXCELLENT**
Fluorescence **STRONG**
Inscription(s) **IGI LG685506583**
Comments:
Secondary color: Orange

ADDITIONAL GRADING INFORMATION

Polish **EXCELLENT**
Symmetry **EXCELLENT**
Fluorescence **STRONG**
Inscription(s) **IGI LG685506583**
Comments:
Secondary color: Orange

COLOR

D E F G H I J Faint Very Light Light

CLARITY

FL IF VS¹⁻² VS¹⁻² SI¹⁻² I¹⁻³

Flawless Internally Flawless Very Very Slightly Included Very Slightly Included Slightly Included Included



IGI



October 10, 2025
IGI Report No **LG685506583**
SQUARE EMERALD CUT
1.09 CARAT
Carat Weight
Color Grade **FANCY INTENSE PINK**
Clarity Grade **VS 1**
Cut Grade **VERY GOOD**
Depth **68.6%**
Table **64%**
Girdle **Slightly Thick to Thick**
Culet **Pointed**
Polish **EXCELLENT**
Symmetry **EXCELLENT**
Fluorescence **STRONG**
Inscription(s) **IGI LG685506583**
Comments:
Secondary color: Orange