



**ELECTRONIC COPY**

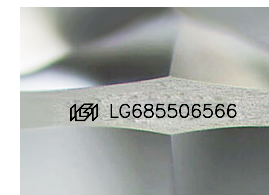
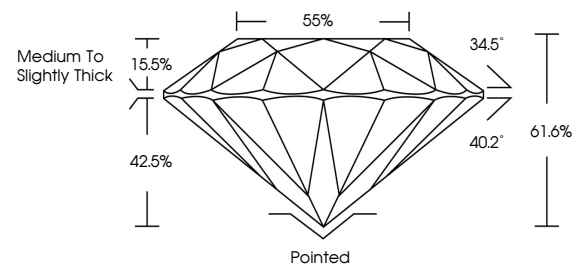
LG685506566  
Report verification at igi.org



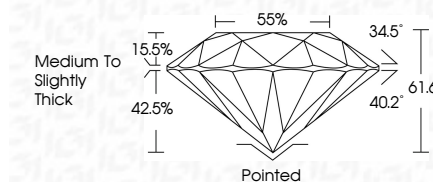
October 10, 2025  
IGI Report Number **LG685506566**  
Description **LABORATORY GROWN DIAMOND**  
Shape and Cutting Style **ROUND BRILLIANT**  
Measurements **6.37 - 6.38 X 3.93 MM**  
**GRADING RESULTS**  
Carat Weight **0.98 CARAT**  
Color Grade **FANCY INTENSE PINK**  
Clarity Grade **VS 2**  
Cut Grade **IDEAL**

October 10, 2025  
IGI Report Number **LG685506566**  
Description **LABORATORY GROWN DIAMOND**  
Shape and Cutting Style **ROUND BRILLIANT**  
Measurements **6.37 - 6.38 X 3.93 MM**  
**GRADING RESULTS**  
Carat Weight **0.98 CARAT**  
Color Grade **FANCY INTENSE PINK**  
Clarity Grade **VS 2**  
Cut Grade **IDEAL**

**PROPORTIONS**



Sample Image Used



**ADDITIONAL GRADING INFORMATION**

Polish **EXCELLENT**  
Symmetry **EXCELLENT**  
Fluorescence **STRONG**  
Inscription(s) **IGI LG685506566**  
Comments:  
Secondary color: Orange

**ADDITIONAL GRADING INFORMATION**

Polish **EXCELLENT**  
Symmetry **EXCELLENT**  
Fluorescence **STRONG**  
Inscription(s) **IGI LG685506566**  
Comments:  
Secondary color: Orange

**COLOR**

D E F G H I J Faint Very Light Light

**CLARITY**

FL	IF	VS <sup>1-2</sup>	VS <sup>1-2</sup>	SI <sup>1-2</sup>	I <sup>1-3</sup>
Flawless	Internally Flawless	Very Very Slightly Included	Very Slightly Included	Slightly Included	Included



**IGI**



October 10, 2025  
IGI Report No **LG685506566**  
**ROUND BRILLIANT**  
**6.37 - 6.38 X 3.93 MM**  
Carat Weight **0.98 CARAT**  
Color Grade **FANCY INTENSE PINK**  
Clarity Grade **VS 2**  
Cut Grade **IDEAL**  
Depth **61.6%**  
Table **85%**  
Girdle **Medium To Slightly Thick**  
Culet **Pointed**  
Polish **EXCELLENT**  
Symmetry **EXCELLENT**  
Fluorescence **STRONG**  
Inscription(s) **IGI LG685506566**  
Comments:  
Secondary color: Orange