



ELECTRONIC COPY

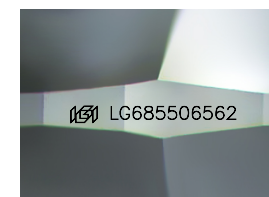
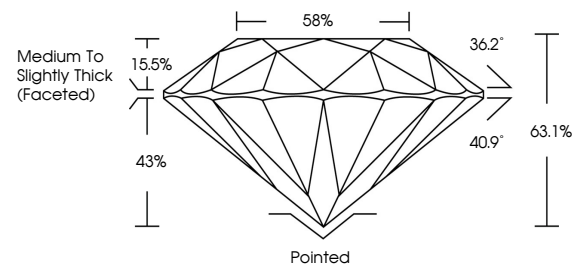
LG685506562
Report verification at igi.org



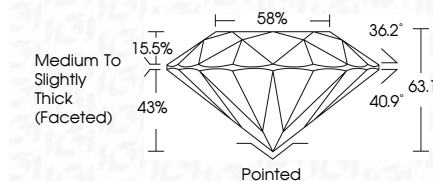
October 10, 2025
IGI Report Number **LG685506562**
Description **LABORATORY GROWN DIAMOND**
Shape and Cutting Style **ROUND BRILLIANT**
Measurements **6.22 - 6.25 X 3.94 MM**
GRADING RESULTS
Carat Weight **0.96 CARAT**
Color Grade **FANCY INTENSE PINK**
Clarity Grade **VS 2**
Cut Grade **EXCELLENT**

October 10, 2025
IGI Report Number **LG685506562**
Description **LABORATORY GROWN DIAMOND**
Shape and Cutting Style **ROUND BRILLIANT**
Measurements **6.22 - 6.25 X 3.94 MM**
GRADING RESULTS
Carat Weight **0.96 CARAT**
Color Grade **FANCY INTENSE PINK**
Clarity Grade **VS 2**
Cut Grade **EXCELLENT**

PROPORTIONS



Sample Image Used



ADDITIONAL GRADING INFORMATION

Polish **EXCELLENT**
Symmetry **EXCELLENT**
Fluorescence **STRONG**
Inscription(s) **IGI LG685506562**
Comments:
Secondary color: Orange

ADDITIONAL GRADING INFORMATION

Polish **EXCELLENT**
Symmetry **EXCELLENT**
Fluorescence **STRONG**
Inscription(s) **IGI LG685506562**
Comments:
Secondary color: Orange

COLOR

D E F G H I J Faint Very Light Light

CLARITY

FL	IF	VS ¹⁻²	VS ¹⁻²	SI ¹⁻²	I ¹⁻³
Flawless	Internally Flawless	Very Very Slightly Included	Very Slightly Included	Slightly Included	Included



IGI



October 10, 2025
IGI Report No LG685506562
ROUND BRILLIANT
6.22 - 6.25 X 3.94 MM
0.96 CARAT
FANCY INTENSE PINK
VS 2
EXCELLENT
63.1%
88%
Medium To Slightly Thick (Faceted)
Pointed
EXCELLENT
EXCELLENT
STRONG
IGI LG685506562
Comments:
Secondary color: Orange