



ELECTRONIC COPY

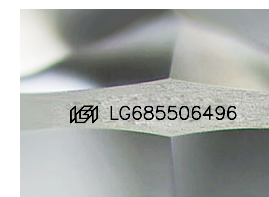
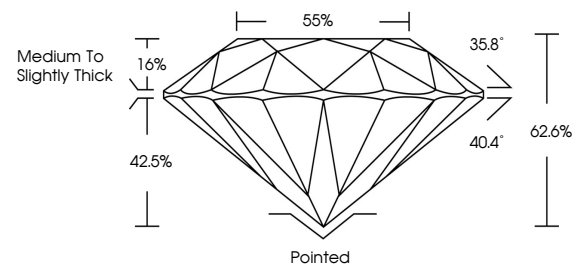
LG685506496
Report verification at igi.org



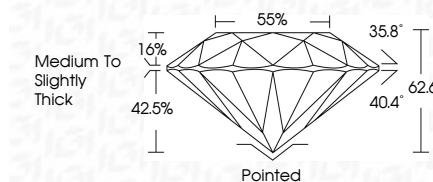
October 10, 2025
IGI Report Number **LG685506496**
Description **LABORATORY GROWN DIAMOND**
Shape and Cutting Style **ROUND BRILLIANT**
Measurements **6.28 - 6.29 X 3.94 MM**
GRADING RESULTS
Carat Weight **0.97 CARAT**
Color Grade **FANCY INTENSE PINK**
Clarity Grade **VVS 1**
Cut Grade **EXCELLENT**

October 10, 2025
IGI Report Number **LG685506496**
Description **LABORATORY GROWN DIAMOND**
Shape and Cutting Style **ROUND BRILLIANT**
Measurements **6.28 - 6.29 X 3.94 MM**
GRADING RESULTS
Carat Weight **0.97 CARAT**
Color Grade **FANCY INTENSE PINK**
Clarity Grade **VVS 1**
Cut Grade **EXCELLENT**

PROPORTIONS



Sample Image Used



ADDITIONAL GRADING INFORMATION

Polish **EXCELLENT**
Symmetry **EXCELLENT**
Fluorescence **STRONG**
Inscription(s) **IGI LG685506496**
Comments:
Secondary color: Orange

ADDITIONAL GRADING INFORMATION

Polish **EXCELLENT**
Symmetry **EXCELLENT**
Fluorescence **STRONG**
Inscription(s) **IGI LG685506496**
Comments:
Secondary color: Orange

COLOR

D E F G H I J Faint Very Light Light

CLARITY

FL	IF	VVS ¹⁻²	VS ¹⁻²	SI ¹⁻²	I ¹⁻³
Flawless	Internally Flawless	Very Very Slightly Included	Very Slightly Included	Slightly Included	Included



IGI



October 10, 2025
IGI Report No **LG685506496**
ROUND BRILLIANT
6.28 - 6.29 X 3.94 MM
Carat Weight **0.97 CARAT**
Color Grade **FANCY INTENSE PINK**
Clarity Grade **VVS 1**
Depth **62.6%**
Table **16%**
Girdle **Medium To Slightly Thick**
Culet **Pointed**
Polish **EXCELLENT**
Symmetry **EXCELLENT**
Fluorescence **STRONG**
Inscription(s) **IGI LG685506496**
Comments:
Secondary color: Orange