



**ELECTRONIC COPY**

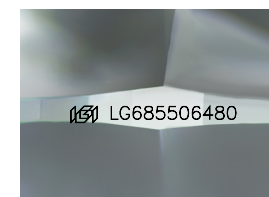
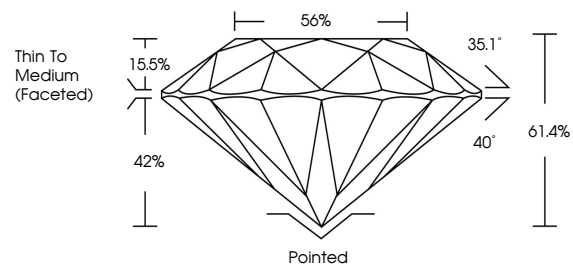
LG685506480  
Report verification at [igi.org](http://igi.org)



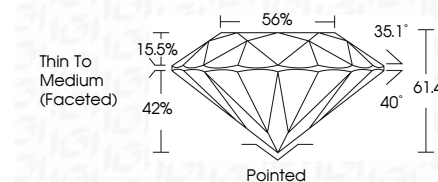
October 10, 2025  
IGI Report Number **LG685506480**  
Description **LABORATORY GROWN DIAMOND**  
Shape and Cutting Style **ROUND BRILLIANT**  
Measurements **6.45 - 6.50 X 3.98 MM**  
**GRADING RESULTS**  
Carat Weight **1.03 CARAT**  
Color Grade **FANCY INTENSE PINK**  
Clarity Grade **VS 2**  
Cut Grade **IDEAL**

October 10, 2025  
IGI Report Number **LG685506480**  
Description **LABORATORY GROWN DIAMOND**  
Shape and Cutting Style **ROUND BRILLIANT**  
Measurements **6.45 - 6.50 X 3.98 MM**  
**GRADING RESULTS**  
Carat Weight **1.03 CARAT**  
Color Grade **FANCY INTENSE PINK**  
Clarity Grade **VS 2**  
Cut Grade **IDEAL**

**PROPORTIONS**



Sample Image Used



**ADDITIONAL GRADING INFORMATION**

Polish **EXCELLENT**  
Symmetry **EXCELLENT**  
Fluorescence **STRONG**  
Inscription(s) **IGI LG685506480**  
Comments:  
Secondary color: Orange

**ADDITIONAL GRADING INFORMATION**

Polish **EXCELLENT**  
Symmetry **EXCELLENT**  
Fluorescence **STRONG**  
Inscription(s) **IGI LG685506480**  
Comments:  
Secondary color: Orange

**COLOR**

D E F G H I J Faint Very Light Light

**CLARITY**

FL	IF	VS <sup>1-2</sup>	VS <sup>1-2</sup>	SI <sup>1-2</sup>	I <sup>1-3</sup>
Flawless	Internally Flawless	Very Very Slightly Included	Very Slightly Included	Slightly Included	Included



**IGI**



October 10, 2025  
IGI Report No LG685506480  
**ROUND BRILLIANT**  
6.45 - 6.50 X 3.98 MM  
1.03 CARAT  
FANCY INTENSE PINK  
VS 2  
IDEAL  
61.4%  
56%  
Thin To Medium (Faceted)  
Pointed  
EXCELLENT  
EXCELLENT  
STRONG  
IGI LG685506480  
Comments:  
Secondary color: Orange