



ELECTRONIC COPY

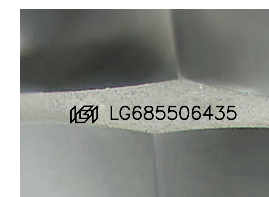
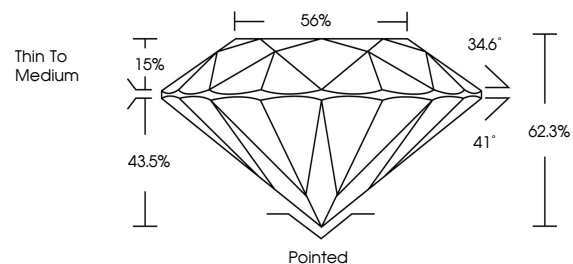
LG685506435
Report verification at igi.org



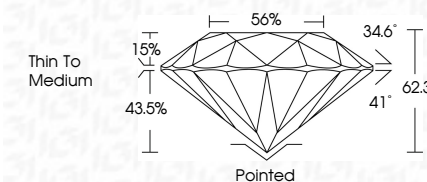
October 10, 2025
IGI Report Number **LG685506435**
Description **LABORATORY GROWN DIAMOND**
Shape and Cutting Style **ROUND BRILLIANT**
Measurements **6.83 - 6.89 X 4.28 MM**
GRADING RESULTS
Carat Weight **1.24 CARAT**
Color Grade **FANCY INTENSE PINK**
Clarity Grade **VS 2**
Cut Grade **IDEAL**

October 10, 2025
IGI Report Number **LG685506435**
Description **LABORATORY GROWN DIAMOND**
Shape and Cutting Style **ROUND BRILLIANT**
Measurements **6.83 - 6.89 X 4.28 MM**
GRADING RESULTS
Carat Weight **1.24 CARAT**
Color Grade **FANCY INTENSE PINK**
Clarity Grade **VS 2**
Cut Grade **IDEAL**

PROPORTIONS



Sample Image Used



ADDITIONAL GRADING INFORMATION

Polish **EXCELLENT**
Symmetry **EXCELLENT**
Fluorescence **STRONG**
Inscription(s) **IGI LG685506435**
Comments:
Secondary color: Orange

COLOR

D E F G H I J Faint Very Light Light

CLARITY

FL	IF	VS ¹⁻²	VS ¹⁻²	SI ¹⁻²	I ¹⁻³
Flawless	Internally Flawless	Very Very Slightly Included	Very Slightly Included	Slightly Included	Included

ADDITIONAL GRADING INFORMATION

Polish **EXCELLENT**
Symmetry **EXCELLENT**
Fluorescence **STRONG**
Inscription(s) **IGI LG685506435**
Comments:
Secondary color: Orange



IGI



October 10, 2025
IGI Report No **LG685506435**
ROUND BRILLIANT
6.83 - 6.89 X 4.28 MM
1.24 CARAT
FANCY INTENSE PINK
VS 2
IDEAL
62.3%
56%
Thin To Medium
Pointed
EXCELLENT
EXCELLENT
STRONG
IGI LG685506435
Comments:
Secondary color: Orange