



**ELECTRONIC COPY**

LG684512353  
Report verification at igi.org



February 28, 2025

IGI Report Number **LG684512353**

Description **LABORATORY GROWN DIAMOND**

Shape and Cutting Style **CUT CORNERED  
RECTANGULAR MODIFIED  
BRILLIANT**

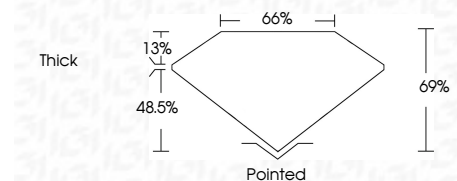
Measurements **6.97 X 5.04 X 3.48 MM**

**GRADING RESULTS**

Carat Weight **1.23 CARAT**

Color Grade **FANCY VIVID YELLOW**

Clarity Grade **VS 1**



**ADDITIONAL GRADING INFORMATION**

Polish **EXCELLENT**

Symmetry **EXCELLENT**

Fluorescence **NONE**

Inscription(s) **(IGI) LG684512353**

Comments: This Laboratory Grown Diamond was created by Chemical Vapor Deposition (CVD) growth process.



**IGI**

February 28, 2025

IGI Report Number **LG684512353**

Description **LABORATORY GROWN DIAMOND**

Shape and Cutting Style **CUT CORNERED RECTANGULAR  
MODIFIED BRILLIANT**

Measurements **6.97 X 5.04 X 3.48 MM**

**GRADING RESULTS**

Carat Weight **1.23 CARAT**

Color Grade **FANCY VIVID YELLOW**

Clarity Grade **VS 1**

**ADDITIONAL GRADING INFORMATION**

Polish **EXCELLENT**

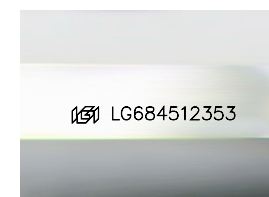
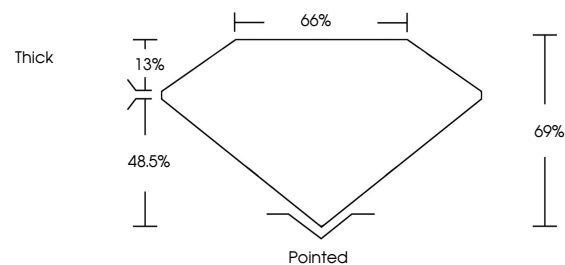
Symmetry **EXCELLENT**

Fluorescence **NONE**

Inscription(s) **(IGI) LG684512353**

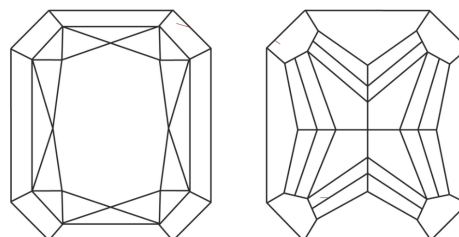
Comments: This Laboratory Grown Diamond was created by Chemical Vapor Deposition (CVD) growth process.

**PROPORTIONS**



Sample Image Used

**CLARITY CHARACTERISTICS**



**KEY TO SYMBOLS**

Red symbols indicate internal characteristics.  
Green symbols indicate external characteristics.

**COLOR**

D E F G H I J Faint Very Light Light

**CLARITY**

IF WS<sup>1-2</sup> VS<sup>1-2</sup> SI<sup>1-2</sup> I<sup>1-3</sup>

Internally Flawless Very Very Slightly Included Very Slightly Included Slightly Included Included

February 28, 2025  
IGI Report No LG684512353  
CUT CORNERED RECT. MODIFIED BRILLIANT  
6.97 X 5.04 X 3.48 MM  
Carat Weight 1.23 CARAT  
Color Grade FANCY VIVID YELLOW  
Clarity Grade VS 1  
Depth 67%  
Table 65%  
Girdle Thick  
Culet Pointed  
Polish EXCELLENT  
Symmetry EXCELLENT  
Fluorescence NONE  
Inscription(s) (IGI) LG684512353  
Comments: This Laboratory Grown Diamond was created by Chemical Vapor Deposition (CVD) growth process.

