

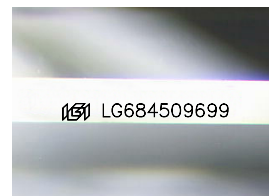
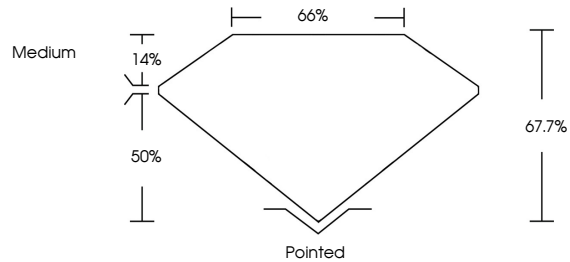


**INTERNATIONAL
GEMOLOGICAL
INSTITUTE**

ELECTRONIC COPY

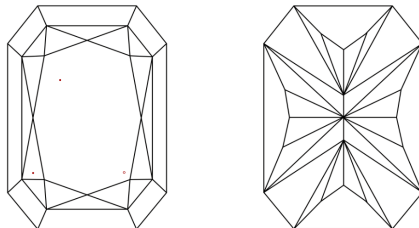
LG684509699
Report verification at [igi.org](https://www.igi.org)

PROPORTIONS



Sample Image Used

CLARITY CHARACTERISTICS



KEY TO SYMBOLS

Red symbols indicate internal characteristics.
Green symbols indicate external characteristics.

COLOR

D E F G H I J Faint Very Light Light

CLARITY

IF	WVS ¹⁻²	VS ¹⁻²	SI ¹⁻²	I ¹⁻³
Internally Flawless	Very Very Slightly Included	Very Slightly Included	Slightly Included	Included

LABORATORY GROWN DIAMOND REPORT



February 19, 2025

IGI Report Number **LG684509699**

Description	LABORATORY GROWN DIAMOND
-------------	--------------------------

Shape and Cutting Style

CUT CORNERED
RECTANGULAR MODIFIED
BRILLIANT

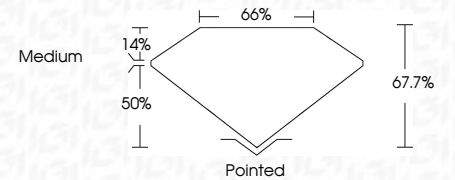
Measurements **8.33 X 5.72 X 3.87 MM**

GRADING RESULTS

Carat Weight 1.58 CARAT

Color Grade	D
-------------	---

Clarity Grade VS 1



ADDITIONAL GRADING INFORMATION

Polish **EXCELLENT**Symmetry **EXCELLENT**Fluorescence **NONE**Inscription(s)  LG684509699

Comments: This Laboratory Grown Diamond was created by Chemical Vapor Deposition (CVD) growth process.
Type IIa



IGI



© IGI 2020, International Gemological Institute

FD - 10 20

www.igi.org

THIS DOCUMENT WAS PRODUCED WITH THE FOLLOWING SECURITY MEASURES: SPECIAL DOCUMENT PAPER, INK SCREENS, WATERMARK BACKGROUND DESIGNS, HOLOGRAM AND OTHER SECURITY FEATURES NOT LISTED AND DO EXCEED DOCUMENT SECURITY INDUSTRY GUIDELINES.

February 19, 2025		IGI Report No LG45459099			
CUT CORNERED RECT. MODIFIED BRILLIANT		CUT CORNERED RECT. MODIFIED BRILLIANT			
3.93 X 5.72 X 3.87 MM		1.56 CARAT			
Carat Weight		D			
Color Grade		VS 1			
Clarity Grade		67.7%			
Depth		66%			
Table		Medium			
Girdle		Pointed			
Culet		EXCELLENT			
Polish		EXCELLENT			
Symmetry		NONE			
Fluorescence		NONE			
Inscriptions		1691 LG45459099			
Comments:					
This Laboratory Grown Diamond was created by Chemical Vapor Deposition (CVD) growth process.					
Type Ia					