



ELECTRONIC COPY

LG684508209
Report verification at igi.org



March 12, 2025
IGI Report Number **LG684508209**
Description **LABORATORY GROWN DIAMOND**
Shape and Cutting Style **TAPERED BAGUETTE**
Measurements **8.15 X 7.18 X 3.97 MM**
GRADING RESULTS
Carat Weight **2.30 CARATS**
Color Grade **FANCY INTENSE PINK**
Clarity Grade **VVS 2**

March 12, 2025
IGI Report Number **LG684508209**
Description **LABORATORY GROWN DIAMOND**
Shape and Cutting Style **TAPERED BAGUETTE**
Measurements **8.15 X 7.18 X 3.97 MM**

GRADING RESULTS

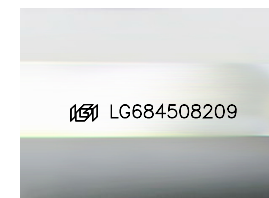
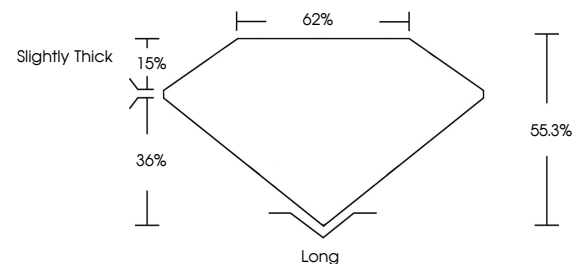
Carat Weight **2.30 CARATS**
Color Grade **FANCY INTENSE PINK**
Clarity Grade **VVS 2**

ADDITIONAL GRADING INFORMATION

Polish **VERY GOOD**
Symmetry **EXCELLENT**
Fluorescence **SLIGHT**
Inscription(s) **LG684508209**

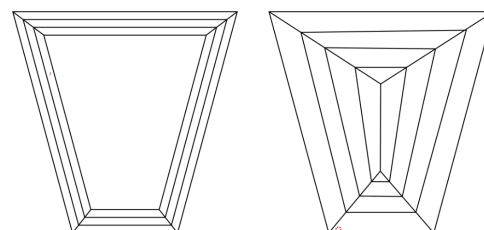
Comments: This Laboratory Grown Diamond was created by Chemical Vapor Deposition (CVD) growth process.
Indications of post-growth treatment.

PROPORTIONS



Sample Image Used

CLARITY CHARACTERISTICS



KEY TO SYMBOLS

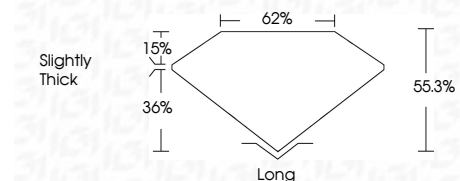
Red symbols indicate internal characteristics.
Green symbols indicate external characteristics.

COLOR

D E F G H I J Faint Very Light Light

CLARITY

IF	VS ¹⁻²	VS ¹⁻²	SI ¹⁻²	I ¹⁻³
Internally Flawless	Very Very Slightly Included	Very Slightly Included	Slightly Included	Included



ADDITIONAL GRADING INFORMATION

Polish **VERY GOOD**
Symmetry **EXCELLENT**
Fluorescence **SLIGHT**
Inscription(s) **LG684508209**
Comments: This Laboratory Grown Diamond was created by Chemical Vapor Deposition (CVD) growth process.
Indications of post-growth treatment.



March 12, 2025
IGI Report No **LG684508209**
TAPERED BAGUETTE
8.15 X 7.18 X 3.97 MM
2.30 CARATS
FANCY INTENSE PINK
Carat Weight
Color Grade
Clarity Grade
Depth
Table
Girdle
Slightly Thick
Culet
Long
Polish
Symmetry
Fluorescence
Inscription(s)
VERY GOOD
EXCELLENT
SLIGHT
 LG684508209
Comments: This Laboratory Grown Diamond was created by Chemical Vapor Deposition (CVD) growth process.
Indications of post-growth treatment.