



# INTERNATIONAL GEMOLOGICAL INSTITUTE

ELECTRONIC COPY

LG684502938



February 18, 2025

IGI Report Number LG684502938

OVAL BRILLIANT

LABORATORY GROWN DIAMOND

7.99 X 5.59 X 3.46 MM

Carat Weight 0.97 CARAT

Color Grade E

Clarity Grade VS 1

Polish EXCELLENT

Symmetry EXCELLENT

Fluorescence NONE

Inscription(s) IGI LG684502938

Comments: This Laboratory Grown Diamond was created by Chemical Vapor Deposition (CVD) growth process. Type IIa

## LABORATORY GROWN DIAMOND REPORT

February 18, 2025

IGI Report Number

LG684502938

Description

LABORATORY GROWN DIAMOND

Shape and Cutting Style

OVAL BRILLIANT

Measurements

7.99 X 5.59 X 3.46 MM

### GRADING RESULTS

Carat Weight 0.97 CARAT

Color Grade E

Clarity Grade VS 1

### ADDITIONAL GRADING INFORMATION

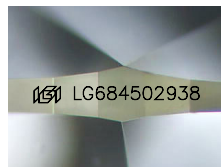
Polish EXCELLENT

Symmetry EXCELLENT

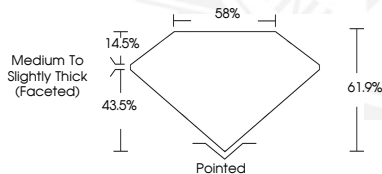
Fluorescence NONE

Inscription(s) IGI LG684502938

Comments: This Laboratory Grown Diamond was created by Chemical Vapor Deposition (CVD) growth process. Type IIa



Sample Image Used



February 18, 2025

IGI Report Number LG684502938

OVAL BRILLIANT

LABORATORY GROWN DIAMOND

7.99 X 5.59 X 3.46 MM

Carat Weight 0.97 CARAT

Color Grade E

Clarity Grade VS 1

Polish EXCELLENT

Symmetry EXCELLENT

Fluorescence NONE

Inscription(s) IGI LG684502938

Comments: This Laboratory Grown Diamond was created by Chemical Vapor Deposition (CVD) growth process. Type IIa



THIS DOCUMENT WAS PRODUCED WITH THE FOLLOWING SECURITY MEASURES: SPECIAL DOCUMENT PAPER, INK SCREENS, WATERMARK, BACKGROUND DESIGNS, HOLOGRAM AND OTHER SECURITY FEATURES NOT LISTED AND DO EXCEED DOCUMENT SECURITY INDUSTRY GUIDELINES.

For terms & conditions and to verify this report, please visit [www.igi.org](http://www.igi.org)