



ELECTRONIC COPY

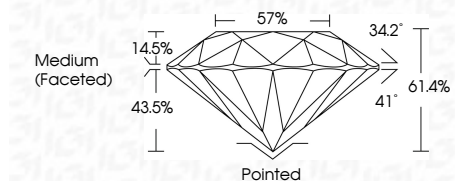
LG683594496
Report verification at igi.org



February 17, 2025
IGI Report Number LG683594496
Description LABORATORY GROWN DIAMOND
Shape and Cutting Style ROUND BRILLIANT
Measurements 9.07 - 9.14 X 5.58 MM

GRADING RESULTS

Carat Weight 2.83 CARATS
Color Grade E
Clarity Grade VS 1
Cut Grade IDEAL

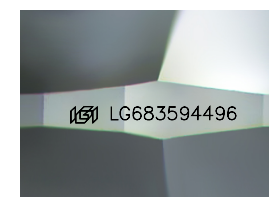


ADDITIONAL GRADING INFORMATION

Polish EXCELLENT
Symmetry EXCELLENT
Fluorescence NONE
Inscription(s) LG683594496
Comments: HEARTS & ARROWS
This Laboratory Grown Diamond was created by Chemical Vapor Deposition (CVD) growth process. Type IIa

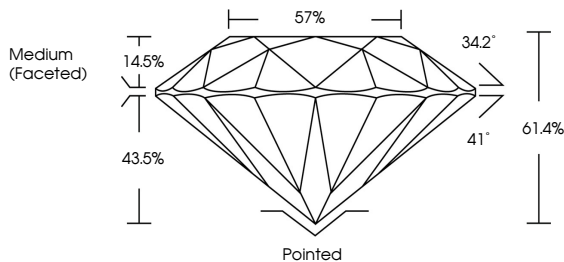


February 17, 2025
IGI Report No LG683594496
ROUND BRILLIANT
9.07 - 9.14 X 5.58 MM
2.83 CARATS E
VS 1 IDEAL
61.4% 57%
Medium (Faceted)
Pointed EXCELLENT EXCELLENT NONE
None LG683594496
Comments: HEARTS & ARROWS
This Laboratory Grown Diamond was created by Chemical Vapor Deposition (CVD) growth process. Type IIa

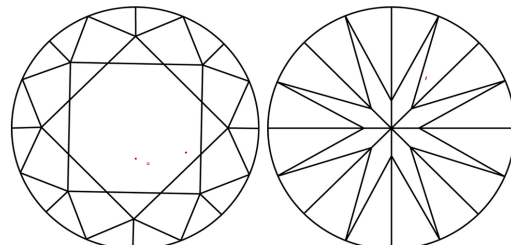


Sample Image Used

PROPORTIONS



CLARITY CHARACTERISTICS



KEY TO SYMBOLS

Red symbols indicate internal characteristics.
Green symbols indicate external characteristics.



COLOR

Table with color grades: D, E, F, G, H, I, J, Faint, Very Light, Light

CLARITY

Table with clarity grades: IF, VS 1-2, VS 1-2, SI 1-2, I 1-3, Internally Flawless, Very Very Slightly Included, Very Slightly Included, Slightly Included, Included

