



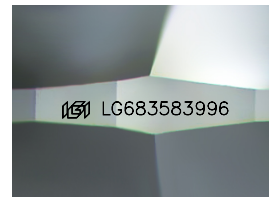
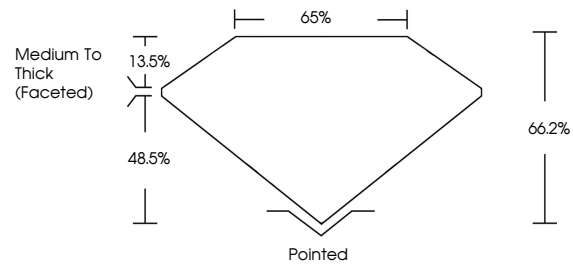
**INTERNATIONAL  
GEMOLOGICAL  
INSTITUTE**

**ELECTRONIC COPY**

## LABORATORY GROWN DIAMOND REPORT

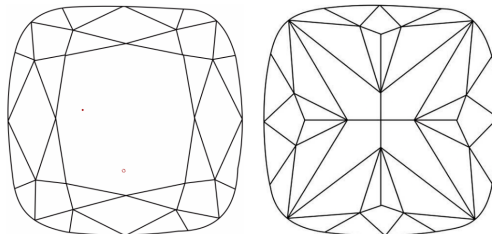
LG683583996  
Report verification at [igi.org](https://igi.org)

## PROPORTIONS



Sample Image Used

## CLARITY CHARACTERISTICS



## KEY TO SYMBOLS

Red symbols indicate internal characteristics.  
Green symbols indicate external characteristics.

## COLOR

D E F G H I J Faint Very Light Light

## CLARITY

IF                      WS<sup>1-2</sup>                      VS<sup>1-2</sup>                      SI<sup>1-2</sup>                      I<sup>1-3</sup>

Internally Flawless	Very Very Slightly Included	Very Slightly Included	Slightly Included	Included
------------------------	--------------------------------	---------------------------	----------------------	----------



© IGI 2020, International Gemological Institute

FD - 10 20

**www.igi.org**

THIS DOCUMENT WAS PRODUCED WITH THE FOLLOWING SECURITY MEASURES: SPECIAL DOCUMENT PAPER, INK SCREENS, WATERMARK, BACKGROUND DESIGNS, HOLOGRAM AND OTHER SECURITY FEATURES NOT LISTED AND DO EXCEED DOCUMENT SECURITY INDUSTRY GUIDELINES

## LABORATORY GROWN DIAMOND REPORT



March 28, 2025

IGI Report Number **LG683583996**

Description	LABORATORY GROWN DIAMOND
-------------	--------------------------

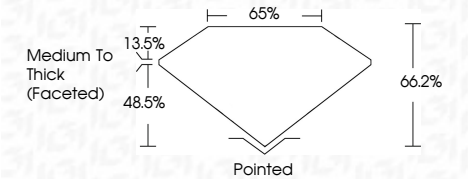
Shape and Cutting Style **SQUARE CUSHION MODIFIED  
BRILLIANT**

Measurements 10.09 X 10.03 X 6.64 MM

## GRADING RESULTS

Carat Weight **5.35 CARATS**

Color Grade **E**

Clarity Grade **VVS 2**

### ADDITIONAL GRADING INFORMATION

Polish **EXCELLENT**Symmetry **EXCELLENT**Fluorescence **NONE**Inscription(s)  LG683583996

Comments: This Laboratory Grown Diamond was created by Chemical Vapor Deposition (CVD) growth process.  
Type IIa



IGI

March 26, 2025	IGI Report No. IGL9339796	10.09 X 10.03 X 6.64 MM	5.35 CARATS	E	VVS 2	66.2%	65%	Medium to Thick (Faceted)	Pointed EXCELLENT	Polish EXCELLENT	Symmetry EXCELLENT	Fluorescence NONE	1691 (G686868976)	Comments: This Laboratory Grown Diamond was created by Chemical Vapor Deposition (CVD) growth process. Type IId
----------------	---------------------------	-------------------------	-------------	---	-------	-------	-----	------------------------------	----------------------	---------------------	-----------------------	----------------------	-------------------	---

**Comments:**  
This Laboratory Grown Diamond was created by Chemical Vapor Deposition (CVD) growth process.  
Type IIa