



**ELECTRONIC COPY**

LG683583867  
Report verification at igi.org



March 24, 2025

IGI Report Number **LG683583867**

Description **LABORATORY GROWN DIAMOND**

Shape and Cutting Style **EMERALD CUT**

Measurements **12.11 X 8.09 X 5.31 MM**

**GRADING RESULTS**

Carat Weight **5.05 CARATS**

Color Grade **G**

Clarity Grade **VS 1**

**LABORATORY GROWN DIAMOND REPORT**

March 24, 2025

IGI Report Number **LG683583867**

Description **LABORATORY GROWN DIAMOND**

Shape and Cutting Style **EMERALD CUT**

Measurements **12.11 X 8.09 X 5.31 MM**

**GRADING RESULTS**

Carat Weight **5.05 CARATS**

Color Grade **G**

Clarity Grade **VS 1**

**ADDITIONAL GRADING INFORMATION**

Polish **EXCELLENT**

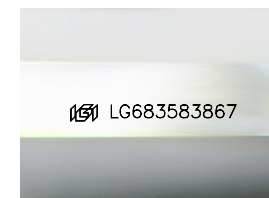
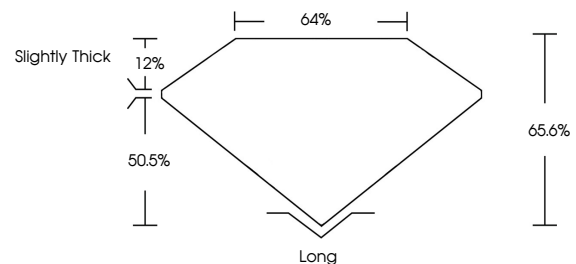
Symmetry **EXCELLENT**

Fluorescence **NONE**

Inscription(s) **LG683583867**

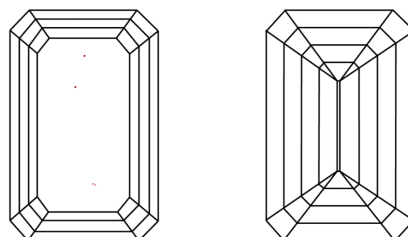
Comments: This Laboratory Grown Diamond was created by Chemical Vapor Deposition (CVD) growth process.  
Type IIa

**PROPORTIONS**



Sample Image Used

**CLARITY CHARACTERISTICS**



**KEY TO SYMBOLS**

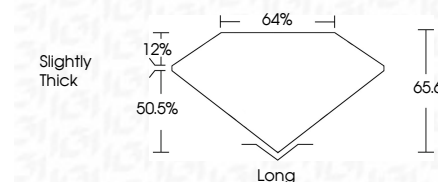
Red symbols indicate internal characteristics.  
Green symbols indicate external characteristics.

**COLOR**

D E F G H I J Faint Very Light Light

**CLARITY**

IF	VS <sup>1-2</sup>	VS <sup>1-2</sup>	SI <sup>1-2</sup>	I <sup>1-3</sup>
Internally Flawless	Very Very Slightly Included	Very Slightly Included	Slightly Included	Included



**ADDITIONAL GRADING INFORMATION**

Polish **EXCELLENT**

Symmetry **EXCELLENT**

Fluorescence **NONE**

Inscription(s) **LG683583867**

Comments: This Laboratory Grown Diamond was created by Chemical Vapor Deposition (CVD) growth process.  
Type IIa



**IGI**



March 24, 2025  
IGI Report No. **LG683583867**  
**EMERALD CUT**

**5.05 CARATS**  
Carat Weight **G**  
Color Grade **G**

Clarity Grade **VS 1**  
Depth **50.5%**  
Table **12%**  
Girdle **Slightly Thick**

Length **64%**  
Culet **EXCELLENT**  
Polish **EXCELLENT**  
Symmetry **EXCELLENT**  
Fluorescence **NONE**  
Inscription(s) **LG683583867**

Comments: This Laboratory Grown Diamond was created by Chemical Vapor Deposition (CVD) growth process.  
Type IIa