



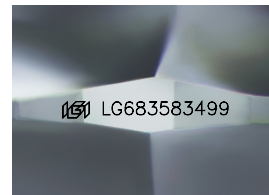
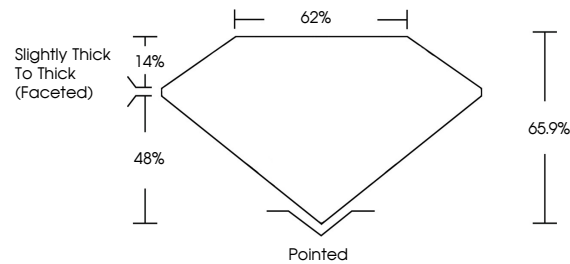
**INTERNATIONAL
GEMOLOGICAL
INSTITUTE**

ELECTRONIC COPY

LABORATORY GROWN DIAMOND REPORT

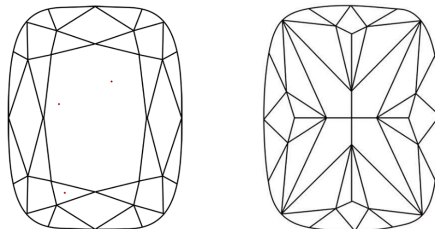
LG683583499
Report verification at [igi.org](https://www.igi.org)

PROPORTIONS



Sample Image Used

CLARITY CHARACTERISTICS



KEY TO SYMBOLS

Red symbols indicate internal characteristics.
Green symbols indicate external characteristics.

COLOR

D E F G H I J Faint Very Light Light

CLARITY

IF WS¹⁻² VS¹⁻² SI¹⁻² I¹⁻³

Internally Flawless	Very Very Slightly Included	Very Slightly Included	Slightly Included	Included
------------------------	--------------------------------	---------------------------	----------------------	----------



© IGI 2020, International Gemological Institute

FD - 10 20

www.igi.org

THIS DOCUMENT WAS PRODUCED WITH THE FOLLOWING SECURITY MEASURES: SPECIAL DOCUMENT PAPER, INK SCREENS, WATERMARK, BACKGROUND DESIGNS, HOLOGRAM AND OTHER SECURITY FEATURES NOT LISTED AND DO EXCEED DOCUMENT SECURITY INDUSTRY GUIDELINES

LABORATORY GROWN DIAMOND REPORT



March 22, 2025

IGI Report Number **LG683583499**

Description	LABORATORY GROWN DIAMOND
-------------	--------------------------

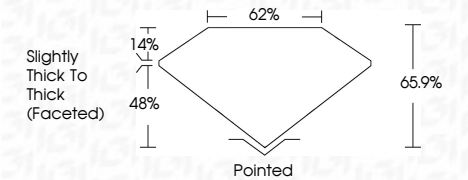
Shape and Cutting Style **CUSHION MODIFIED
BRILLIANT**

Measurements **14.53 X 10.73 X 7.07 MM**

GRADING RESULTS

Carat Weight **9.04 CARATS**

Color Grade	F
-------------	---

Clarity Grade VVS 2

ADDITIONAL GRADING INFORMATION

Polish **EXCELLENT**

Symmetry **EXCELLENT**

Fluorescence **NONE**Inscription(s) LG683583499

Comments: This Laboratory Grown Diamond was created by Chemical Vapor Deposition (CVD) growth process.
Type IIa



IGI

March 22, 2025	IGI Report No LG68593499		CUSHION MODIFIED BRILLIANT	
14.63 X 10.73 X 7.07 MM	9.04 CARATS	F	VVS 2	65.5%
	Color Grade	Clarity Grade	Depth	62%
			Table	
			Girdle	
			Slightly Thick to Thick (Faceted)	
			Polished	
			EXCELLENT	
			Symmetry	
			EXCELLENT	
			Fluorescence	
			NONE	
			Inscription(s)	
			lgf LG68593499	
Comments:				
The Laboratory Grown Diamond was created by Chemical Vapor Deposition (CVD) growth process.				
Type Iia				

Comments:
This Laboratory Grown Diamond was
created by Chemical Vapor Deposition
(CVD) growth process.
Type IIa