



**ELECTRONIC COPY**

LG683582636  
Report verification at igi.org



March 21, 2025  
IGI Report Number **LG683582636**  
Description **LABORATORY GROWN DIAMOND**  
Shape and Cutting Style **PEAR BRILLIANT**  
Measurements **18.34 X 11.77 X 7.17 MM**  
**GRADING RESULTS**  
Carat Weight **9.04 CARATS**  
Color Grade **FANCY INTENSE PINK**  
Clarity Grade **VVS 2**

**LABORATORY GROWN DIAMOND REPORT**

March 21, 2025  
IGI Report Number **LG683582636**  
Description **LABORATORY GROWN DIAMOND**  
Shape and Cutting Style **PEAR BRILLIANT**  
Measurements **18.34 X 11.77 X 7.17 MM**

**GRADING RESULTS**

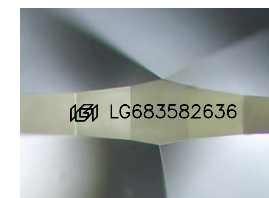
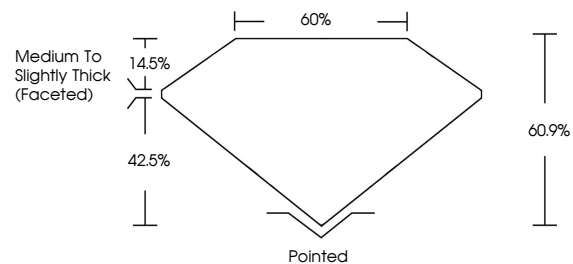
Carat Weight **9.04 CARATS**  
Color Grade **FANCY INTENSE PINK**  
Clarity Grade **VVS 2**

**ADDITIONAL GRADING INFORMATION**

Polish **EXCELLENT**  
Symmetry **EXCELLENT**  
Fluorescence **SLIGHT**  
Inscription(s) **LG683582636**

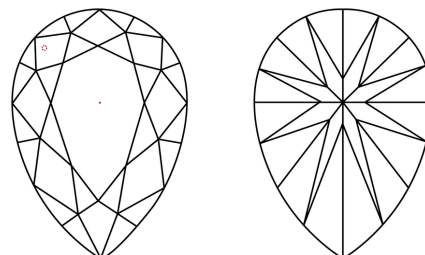
Comments: This Laboratory Grown Diamond was created by Chemical Vapor Deposition (CVD) growth process.  
Indications of post-growth treatment.

**PROPORTIONS**



Sample Image Used

**CLARITY CHARACTERISTICS**



**KEY TO SYMBOLS**

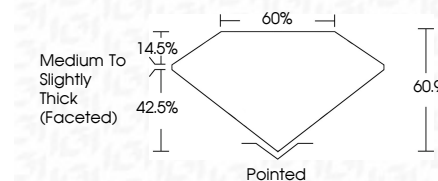
Red symbols indicate internal characteristics.  
Green symbols indicate external characteristics.

**COLOR**

D E F G H I J Faint Very Light Light

**CLARITY**

IF	VS <sup>1-2</sup>	VS <sup>1-2</sup>	SI <sup>1-2</sup>	I <sup>1-3</sup>
Internally Flawless	Very Very Slightly Included	Very Slightly Included	Slightly Included	Included



**ADDITIONAL GRADING INFORMATION**

Polish **EXCELLENT**  
Symmetry **EXCELLENT**  
Fluorescence **SLIGHT**  
Inscription(s) **LG683582636**  
Comments: This Laboratory Grown Diamond was created by Chemical Vapor Deposition (CVD) growth process.  
Indications of post-growth treatment.



March 21, 2025  
IGI Report No LG683582636  
**PEAR BRILLIANT**  
9.04 CARATS  
**FANCY INTENSE PINK**  
VVS 2  
18.34 X 11.77 X 7.17 MM  
60.9%  
Medium to Slightly Thick (Faceted)  
Pointed  
EXCELLENT  
EXCELLENT  
SLIGHT  
IGI LG683582636  
Comments: This Laboratory Grown Diamond was created by Chemical Vapor Deposition (CVD) growth process.  
Indications of post-growth treatment.