



ELECTRONIC COPY

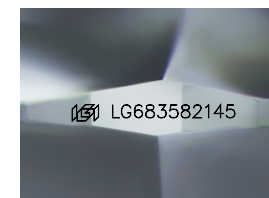
LG683582145
Report verification at igi.org



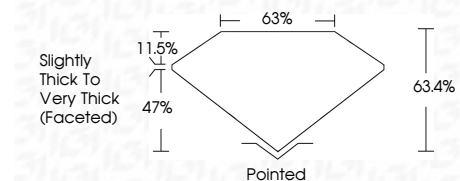
March 16, 2025
IGI Report Number **LG683582145**
Description **LABORATORY GROWN DIAMOND**
Shape and Cutting Style **SQUARE CUSHION MODIFIED BRILLIANT**

Measurements **11.72 X 11.42 X 7.24 MM**

GRADING RESULTS
Carat Weight **8.03 CARATS**
Color Grade **D**
Clarity Grade **VS 2**



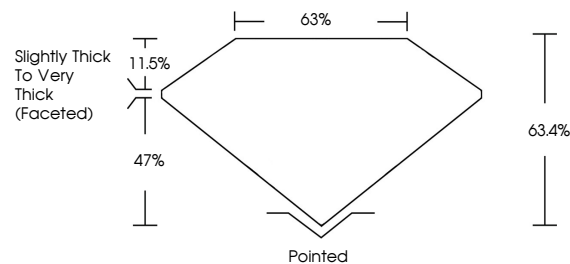
Sample Image Used



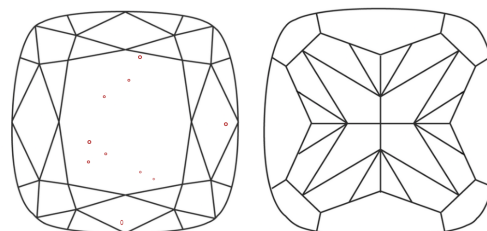
ADDITIONAL GRADING INFORMATION
Polish **EXCELLENT**
Symmetry **EXCELLENT**
Fluorescence **NONE**
Inscription(s) **IGI LG683582145**
Comments: This Laboratory Grown Diamond was created by Chemical Vapor Deposition (CVD) growth process. Type IIa



PROPORTIONS



CLARITY CHARACTERISTICS



KEY TO SYMBOLS

Red symbols indicate internal characteristics.
Green symbols indicate external characteristics.

COLOR

D E F G H I J Faint Very Light Light

CLARITY

IF	VS ¹⁻²	VS ¹⁻²	SI ¹⁻²	I ¹⁻³
Internally Flawless	Very Very Slightly Included	Very Slightly Included	Slightly Included	Included



March 16, 2025
IGI Report No **LG683582145**
SQUARE CUSHION MODIFIED BRILLIANT
11.72 X 11.42 X 7.24 MM
Carat Weight **8.03 CARATS**
Color Grade **D**
Clarity Grade **VS 2**
Table **63.4%**
Girdle **65%**
Slightly Thick To Very Thick (Faceted)
Culet **Pointed**
Polish **EXCELLENT**
Symmetry **EXCELLENT**
Fluorescence **NONE**
Inscription(s) **IGI LG683582145**
Comments: This Laboratory Grown Diamond was created by Chemical Vapor Deposition (CVD) growth process. Type IIa