



ELECTRONIC COPY

LG683579942
Report verification at igi.org



February 24, 2025

IGI Report Number **LG683579942**

Description **LABORATORY GROWN DIAMOND**

Shape and Cutting Style **ROUND BRILLIANT**

Measurements **8.15 - 8.21 X 4.99 MM**

GRADING RESULTS

Carat Weight **2.04 CARATS**

Color Grade **FANCY VIVID PINK**

Clarity Grade **VVS 2**

Cut Grade **IDEAL**

February 24, 2025

IGI Report Number **LG683579942**

Description **LABORATORY GROWN DIAMOND**

Shape and Cutting Style **ROUND BRILLIANT**

Measurements **8.15 - 8.21 X 4.99 MM**

GRADING RESULTS

Carat Weight **2.04 CARATS**

Color Grade **FANCY VIVID PINK**

Clarity Grade **VVS 2**

Cut Grade **IDEAL**

ADDITIONAL GRADING INFORMATION

Polish **EXCELLENT**

Symmetry **EXCELLENT**

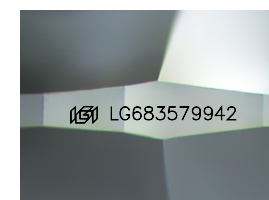
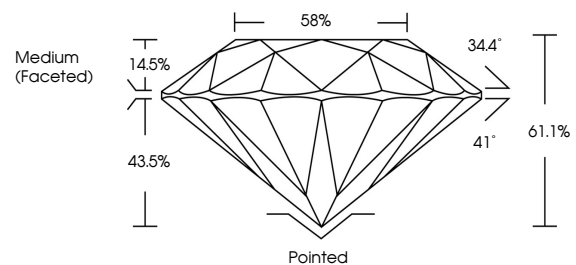
Fluorescence **SLIGHT**

Inscription(s) **LG683579942**

Comments: This Laboratory Grown Diamond was created by Chemical Vapor Deposition (CVD) growth process.

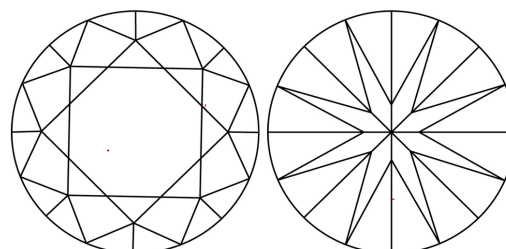
Indications of post-growth treatment.

PROPORTIONS



Sample Image Used

CLARITY CHARACTERISTICS



KEY TO SYMBOLS

Red symbols indicate internal characteristics.
Green symbols indicate external characteristics.

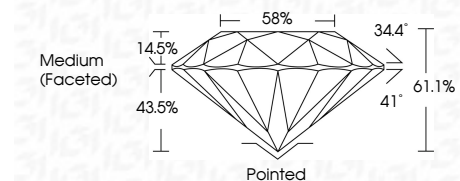
COLOR

D E F G H I J Faint Very Light Light

CLARITY

IF VVS¹⁻² VS¹⁻² SI¹⁻² I¹⁻³

Internally Flawless Very Very Slightly Included Very Slightly Included Slightly Included Included



ADDITIONAL GRADING INFORMATION

Polish **EXCELLENT**

Symmetry **EXCELLENT**

Fluorescence **SLIGHT**

Inscription(s) **LG683579942**

Comments: This Laboratory Grown Diamond was created by Chemical Vapor Deposition (CVD) growth process. Indications of post-growth treatment.



February 24, 2025	2.04 CARATS	Pointed
IGI Report No LG683579942	FANCY VIVID PINK	EXCELLENT
ROUND BRILLIANT	VVS 2	EXCELLENT
8.15 - 8.21 X 4.99 MM	IDEAL	SLIGHT
Color Grade	61.1%	EXCELLENT
Clarity Grade	58%	EXCELLENT
Depth	Medium (Faceted)	EXCELLENT
Table		EXCELLENT
Grade		EXCELLENT
Culet		EXCELLENT
Polish		EXCELLENT
Symmetry		EXCELLENT
Fluorescence		EXCELLENT
Inscription(s)		EXCELLENT
		EXCELLENT

Comments: This Laboratory Grown Diamond was created by Chemical Vapor Deposition (CVD) growth process. Indications of post-growth treatment.