



ELECTRONIC COPY

LG683568815
Report verification at igi.org



February 18, 2025

IGI Report Number **LG683568815**

Description **LABORATORY GROWN DIAMOND**

Shape and Cutting Style **ROUND MIXED CUT**

Measurements **8.24 - 8.27 X 4.97 MM**

GRADING RESULTS

Carat Weight **2.19 CARATS**

Color Grade **E**

Clarity Grade **VS 2**

February 18, 2025

IGI Report Number **LG683568815**

Description **LABORATORY GROWN DIAMOND**

Shape and Cutting Style **ROUND MIXED CUT**

Measurements **8.24 - 8.27 X 4.97 MM**

GRADING RESULTS

Carat Weight **2.19 CARATS**

Color Grade **E**

Clarity Grade **VS 2**

ADDITIONAL GRADING INFORMATION

Polish **EXCELLENT**

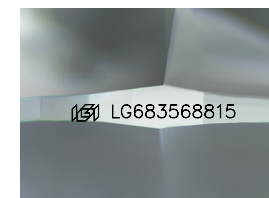
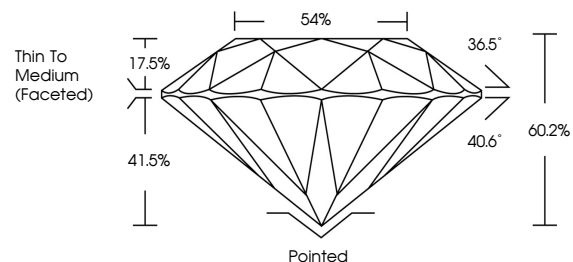
Symmetry **EXCELLENT**

Fluorescence **NONE**

Inscription(s) **LG683568815**

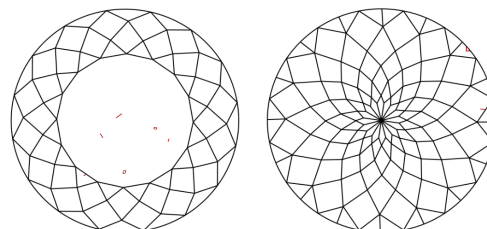
Comments: This Laboratory Grown Diamond was created by Chemical Vapor Deposition (CVD) growth process.
Type IIa

PROPORTIONS



Sample Image Used

CLARITY CHARACTERISTICS



KEY TO SYMBOLS

Red symbols indicate internal characteristics.
Green symbols indicate external characteristics.

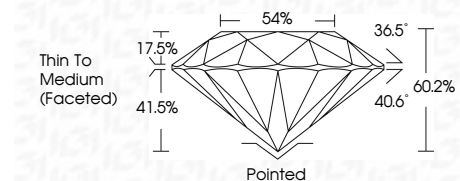
COLOR

D E F G H I J Faint Very Light Light

CLARITY

IF VS¹⁻² VS¹⁻² SI¹⁻² I¹⁻³

Internally Flawless Very Very Slightly Included Very Slightly Included Slightly Included Included



ADDITIONAL GRADING INFORMATION

Polish **EXCELLENT**

Symmetry **EXCELLENT**

Fluorescence **NONE**

Inscription(s) **LG683568815**

Comments: This Laboratory Grown Diamond was created by Chemical Vapor Deposition (CVD) growth process.
Type IIa



IGI



February 18, 2025
IGI Report No LG683568815
ROUND MIXED CUT
8.24 - 8.27 X 4.97 MM
2.19 CARATS
E
VS 2
60.2%
41.5%
Thin To Medium (Faceted)
Pointed
EXCELLENT
EXCELLENT
NONE
None
IGI LG683568815

Comments: This Laboratory Grown Diamond was created by Chemical Vapor Deposition (CVD) growth process.
Type IIa