



ELECTRONIC COPY

LABORATORY GROWN DIAMOND REPORT

February 20, 2025
IGI Report Number LG683565147
Description LABORATORY GROWN DIAMOND
Shape and Cutting Style CUT CORNERED RECTANGULAR MIXED CUT
Measurements 7.59 X 4.99 X 3.08 MM

GRADING RESULTS

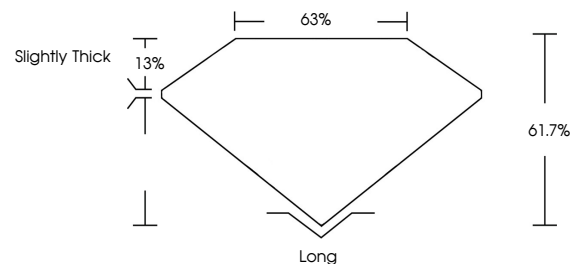
Carat Weight 1.18 CARAT
Color Grade D
Clarity Grade VS 1

ADDITIONAL GRADING INFORMATION

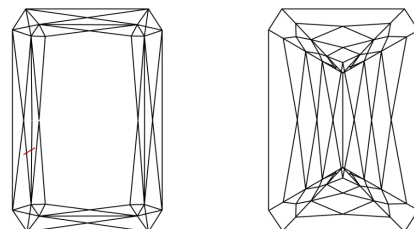
Polish EXCELLENT
Symmetry EXCELLENT
Fluorescence NONE
Inscription(s) LG683565147

Comments: This Laboratory Grown Diamond was created by Chemical Vapor Deposition (CVD) growth process.
Type IIa

PROPORTIONS

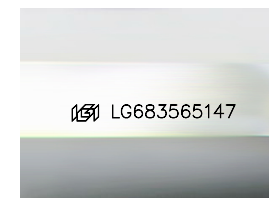


CLARITY CHARACTERISTICS



KEY TO SYMBOLS

Red symbols indicate internal characteristics.
Green symbols indicate external characteristics.



Sample Image Used

COLOR

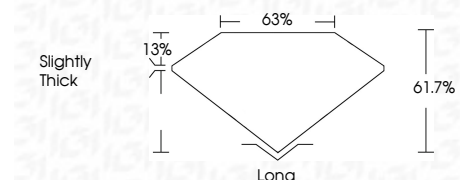
D E F G H I J Faint Very Light Light

CLARITY

IF WS¹⁻² VS¹⁻² SI¹⁻² I¹⁻³
Internally Flawless Very Very Slightly Included Very Slightly Included Slightly Included Included



February 20, 2025
IGI Report Number LG683565147
Description LABORATORY GROWN DIAMOND
Shape and Cutting Style CUT CORNERED RECTANGULAR MIXED CUT
Measurements 7.59 X 4.99 X 3.08 MM
GRADING RESULTS
Carat Weight 1.18 CARAT
Color Grade D
Clarity Grade VS 1



ADDITIONAL GRADING INFORMATION

Polish EXCELLENT
Symmetry EXCELLENT
Fluorescence NONE
Inscription(s) LG683565147
Comments: This Laboratory Grown Diamond was created by Chemical Vapor Deposition (CVD) growth process.
Type IIa



February 20, 2025
IGI Report No. LG683565147
CUT CORNERED RECT. MIXED CUT
1.18 CARAT
D
1.18 CARAT
D
VS 1
61.7%
63%
Slightly Thick
Long
EXCELLENT
EXCELLENT
NONE
NONE
 LG683565147
Comments: This Laboratory Grown Diamond was created by Chemical Vapor Deposition (CVD) growth process.
Type IIa