



ELECTRONIC COPY

LG683565135
Report verification at igi.org



February 14, 2025

IGI Report Number **LG683565135**

Description **LABORATORY GROWN DIAMOND**

Shape and Cutting Style **PRINCESS CUT**

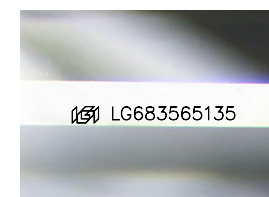
Measurements **6.39 X 6.29 X 4.24 MM**

GRADING RESULTS

Carat Weight **1.53 CARAT**

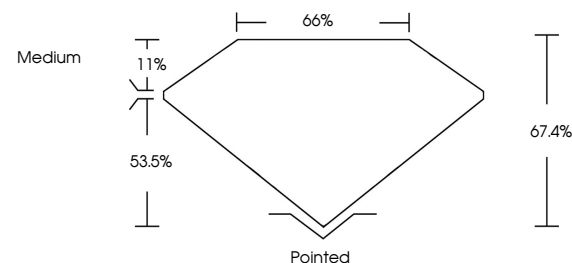
Color Grade **D**

Clarity Grade **VVS 1**

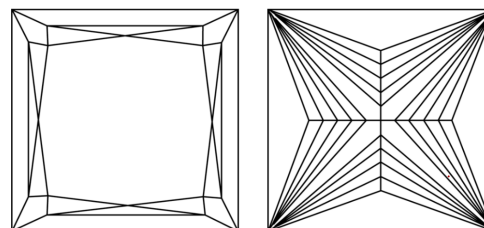


Sample Image Used

PROPORTIONS



CLARITY CHARACTERISTICS



KEY TO SYMBOLS

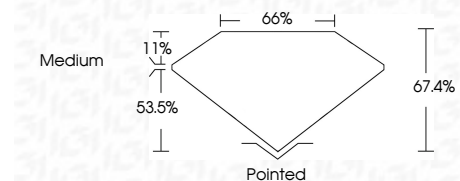
Red symbols indicate internal characteristics.
Green symbols indicate external characteristics.

COLOR

D E F G H I J Faint Very Light Light

CLARITY

IF	VS ¹⁻²	VS ¹⁻²	SI ¹⁻²	I ¹⁻³
Internally Flawless	Very Very Slightly Included	Very Slightly Included	Slightly Included	Included



ADDITIONAL GRADING INFORMATION

Polish **EXCELLENT**

Symmetry **EXCELLENT**

Fluorescence **NONE**

Inscription(s) **IGI LG683565135**

Comments: This Laboratory Grown Diamond was created by Chemical Vapor Deposition (CVD) growth process.
Type IIa



IGI



February 14, 2025
IGI Report No LG683565135
PRINCESS CUT
6.39 X 6.29 X 4.24 MM
1.53 CARAT
D
Color Grade
VS 1
Depth 53.5%
Table 11%
Girdle Medium
Pointed
EXCELLENT
EXCELLENT
NONE
IGI LG683565135
Comments: This Laboratory Grown Diamond was created by Chemical Vapor Deposition (CVD) growth process.
Type IIa