



**ELECTRONIC COPY**

LG683563734  
Report verification at [igi.org](http://igi.org)



March 17, 2025  
IGI Report Number **LG683563734**  
Description **LABORATORY GROWN DIAMOND**  
Shape and Cutting Style **HEART MODIFIED BRILLIANT**  
Measurements **9.07 X 10.39 X 5.06 MM**

**GRADING RESULTS**  
Carat Weight **3.54 CARATS**  
Color Grade **FANCY VIVID YELLOW**  
Clarity Grade **SI 1**

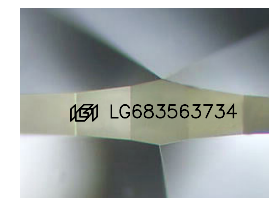
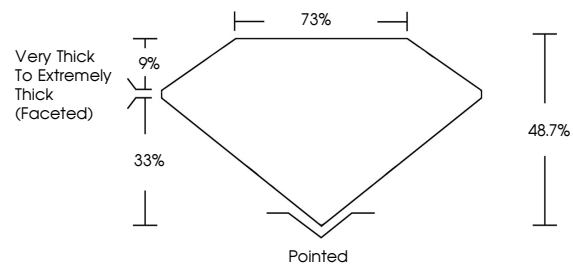
March 17, 2025  
IGI Report Number **LG683563734**  
Description **LABORATORY GROWN DIAMOND**  
Shape and Cutting Style **HEART MODIFIED BRILLIANT**  
Measurements **9.07 X 10.39 X 5.06 MM**

**GRADING RESULTS**  
Carat Weight **3.54 CARATS**  
Color Grade **FANCY VIVID YELLOW**  
Clarity Grade **SI 1**

**ADDITIONAL GRADING INFORMATION**  
Polish **EXCELLENT**  
Symmetry **EXCELLENT**  
Fluorescence **NONE**  
Inscription(s) **LG683563734**

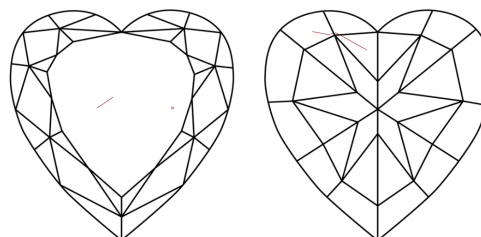
Comments: This Laboratory Grown Diamond was created by Chemical Vapor Deposition (CVD) growth process.

**PROPORTIONS**



Sample Image Used

**CLARITY CHARACTERISTICS**



**KEY TO SYMBOLS**

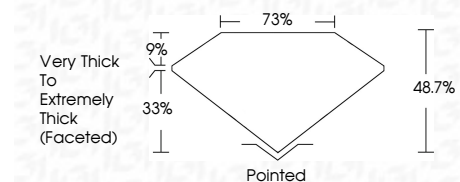
Red symbols indicate internal characteristics.  
Green symbols indicate external characteristics.

**COLOR**

D E F G H I J Faint Very Light Light

**CLARITY**

IF	VS <sup>1-2</sup>	VS <sup>1-2</sup>	SI <sup>1-2</sup>	I <sup>1-3</sup>
Internally Flawless	Very Very Slightly Included	Very Slightly Included	Slightly Included	Included



**ADDITIONAL GRADING INFORMATION**

Polish **EXCELLENT**  
Symmetry **EXCELLENT**  
Fluorescence **NONE**  
Inscription(s) **LG683563734**  
Comments: This Laboratory Grown Diamond was created by Chemical Vapor Deposition (CVD) growth process.



**IGI**



March 17, 2025  
IGI Report No **LG683563734**  
**HEART MODIFIED BRILLIANT**  
**9.07 X 10.39 X 5.06 MM**  
Carat Weight **3.54 CARATS**  
Color Grade **FANCY VIVID YELLOW**  
Clarity Grade **SI 1**  
Depth **48.7%**  
Table **9%**  
Girdle **Very Thick to Extremely Thick (Faceted)**  
Culet **Pointed**  
Polish **EXCELLENT**  
Symmetry **EXCELLENT**  
Fluorescence **NONE**  
Inscription(s) **LG683563734**  
Comments: This Laboratory Grown Diamond was created by Chemical Vapor Deposition (CVD) growth process.