



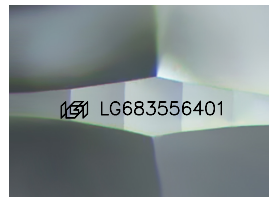
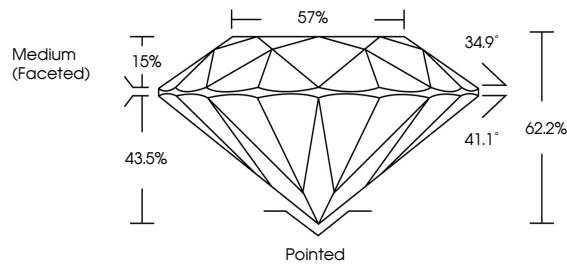
**INTERNATIONAL  
GEMOLOGICAL  
INSTITUTE**

**ELECTRONIC COPY**

## LABORATORY GROWN DIAMOND REPORT

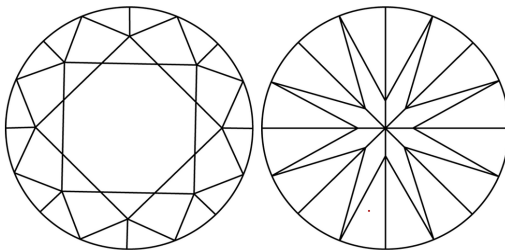
LG683556401  
Report verification at [igi.org](https://igi.org)

## PROPORTIONS



Sample Image Used

## CLARITY CHARACTERISTICS



## KEY TO SYMBOLS

Red symbols indicate internal characteristics.  
Green symbols indicate external characteristics.

**COLOR**

D E F G H I J Faint Very Light Light

## CLARITY

IF                      WS<sup>1-2</sup>                      VS<sup>1-2</sup>                      SI<sup>1-2</sup>                      |<sup>1-3</sup>

Internally Flawless	Very Very Slightly Included	Very Slightly Included	Slightly Included	Included
------------------------	--------------------------------	---------------------------	----------------------	----------



© IGI 2020, International Gemological Institute

FD - 10 20

**www.igi.org**

LABORATORY GROWN DIAMOND REPORT



February 14, 2025

IGI Report Number **LG683556401**

Description	LABORATORY GROWN DIAMOND
-------------	--------------------------

Shape and Cutting Style **ROUND BRILLIANT**

Measurements	8.15 - 8.18 X 5.08 MM
--------------	-----------------------

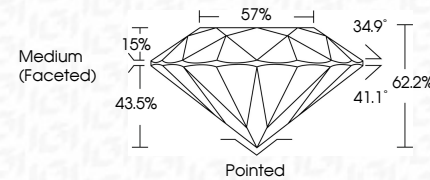
## GRADING RESULTS

Carat Weight **2.08 CARATS**

Color Grade	E
-------------	---

Clarity Grade **VVS 1**

Cut Grade **IDEAL**



### ADDITIONAL GRADING INFORMATION

Polish **EXCELLENT**Symmetry **EXCELLENT**Fluorescence **NONE**Inscription(s)  LG683556401

Comments: This Laboratory Grown Diamond was created by Chemical Vapor Deposition (CVD) growth process.  
Type IIa



IG

February 14, 2025	2.08 CARATS	
IGI Report No LG493556401		
ROUND BRILLIANT		
18.15 x 18.18 x 6.08 MM		
Carat Weight	VVS 1	Pointed
Color Grade	IDEAL	EXCELLENT
Clarity Grade	62.2%	EXCELLENT
Cut Grade	57%	NONE
Depth		1691 LG493556401
Table	Medium (Faceted)	
Girdle		
Culet		
Polish		
Symmetry		
Fluorescence		
Inscription(s)		
Comments: This is a Chemically Grown Diamond was created by Chemical Vapor Deposition (CVD) growth process. Type IIa		