



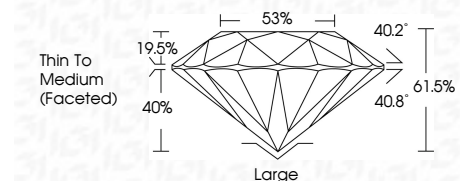
**ELECTRONIC COPY**

LG683553082  
Report verification at igi.org



February 20, 2025  
IGI Report Number **LG683553082**  
Description **LABORATORY GROWN DIAMOND**  
Shape and Cutting Style **OLD EUROPEAN CUT**  
Measurements **7.86 - 7.91 X 4.85 MM**

**GRADING RESULTS**  
Carat Weight **1.94 CARAT**  
Color Grade **F**  
Clarity Grade **VS 2**



**ADDITIONAL GRADING INFORMATION**  
Polish **EXCELLENT**  
Symmetry **EXCELLENT**  
Fluorescence **NONE**  
Inscription(s) **IGI LG683553082**  
Comments: This Laboratory Grown Diamond was created by Chemical Vapor Deposition (CVD) growth process. Type IIa



February 20, 2025  
IGI Report No LG683553082  
**OLD EUROPEAN CUT**  
1.94 CARAT  
F  
VS 2  
61.6%  
85%  
Thin To Medium (Faceted)  
Large  
EXCELLENT  
EXCELLENT  
NONE  
IGI LG683553082  
Comments: This Laboratory Grown Diamond was created by Chemical Vapor Deposition (CVD) growth process. Type IIa

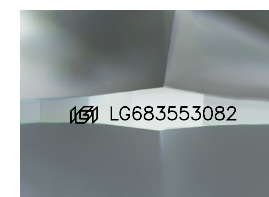
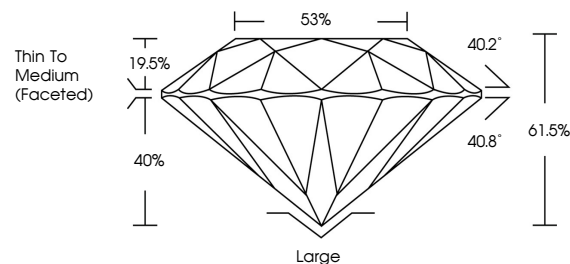
February 20, 2025  
IGI Report Number **LG683553082**  
Description **LABORATORY GROWN DIAMOND**  
Shape and Cutting Style **OLD EUROPEAN CUT**  
Measurements **7.86 - 7.91 X 4.85 MM**

**GRADING RESULTS**  
Carat Weight **1.94 CARAT**  
Color Grade **F**  
Clarity Grade **VS 2**

**ADDITIONAL GRADING INFORMATION**  
Polish **EXCELLENT**  
Symmetry **EXCELLENT**  
Fluorescence **NONE**  
Inscription(s) **IGI LG683553082**

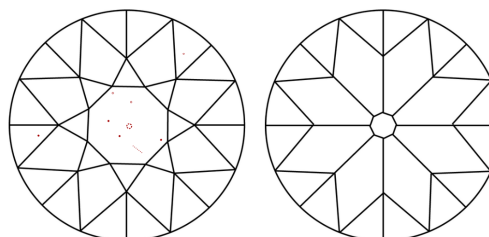
Comments: This Laboratory Grown Diamond was created by Chemical Vapor Deposition (CVD) growth process. Type IIa

**PROPORTIONS**



Sample Image Used

**CLARITY CHARACTERISTICS**



**KEY TO SYMBOLS**

Red symbols indicate internal characteristics.  
Green symbols indicate external characteristics.

**COLOR**

D E F G H I J Faint Very Light Light

**CLARITY**

IF	VS <sup>1-2</sup>	VS <sup>1-2</sup>	SI <sup>1-2</sup>	I <sup>1-3</sup>
Internally Flawless	Very Very Slightly Included	Very Slightly Included	Slightly Included	Included

