

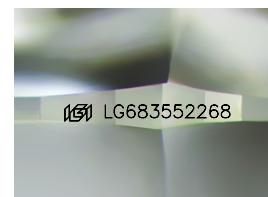
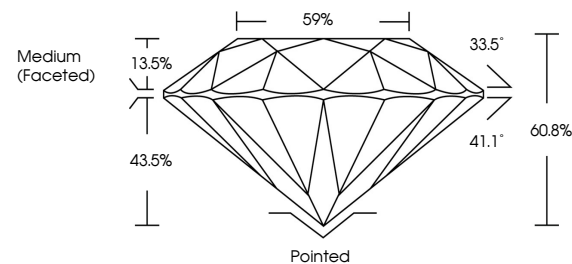


ELECTRONIC COPY

LABORATORY GROWN DIAMOND REPORT

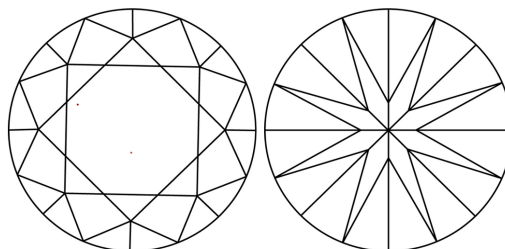
LG683552268
Report verification at igi.org

PROPORTIONS



Sample Image Used

CLARITY CHARACTERISTICS



KEY TO SYMBOLS

Red symbols indicate internal characteristics.
Green symbols indicate external characteristics.

COLOR

D E F G H I J Faint Very Light Light

CLARITY

IF WS¹⁻² VS¹⁻² SI¹⁻² |¹⁻³

Internally Flawless	Very Very Slightly Included	Very Slightly Included	Slightly Included	Included
------------------------	--------------------------------	---------------------------	----------------------	----------

LABORATORY GROWN DIAMOND REPORT



March 17, 2025

IGI Report Number **LG683552268**

Description	LABORATORY GROWN DIAMOND
-------------	--------------------------

Shape and Cutting Style **ROUND BRILLIANT**

Measurements 10.70 - 10.77 X 6.54 MM

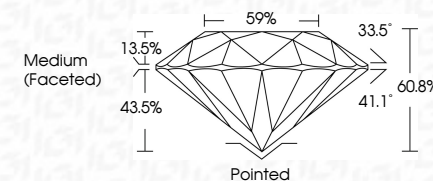
GRADING RESULTS

Carat Weight **4.60 CARATS**

Color Grade E

Clarity Grade VS 1

Cut Grade **IDEAL**



ADDITIONAL GRADING INFORMATION

Polish **EXCELLENT**Symmetry **EXCELLENT**Fluorescence **NONE**Inscription(s) LG683552268

Comments: This Laboratory Grown Diamond was created by Chemical Vapor Deposition (CVD) growth process.

Type IIa



www.igi.org

© IGI 2020, International Gemological Institute

FD - 10 20



THIS DOCUMENT WAS PRODUCED WITH THE FOLLOWING SECURITY MEASURES: SPECIAL DOCUMENT PAPER, INK SCREENS, WATERMARK, BACKGROUND DESIGNS, HOLOGRAM AND OTHER SECURITY FEATURES NOT LISTED AND DO EXCEED DOCUMENT SECURITY INDUSTRY GUIDELINE

March 17, 2026	4.60 CARATS	E	VS 1	Patched	Comments: The Laboratory Grown Diamond was produced using the Vapor Deposition (CVD) growth process. Type IIa
IG Report No. LG48352248		IDEAL	50.8%	EXCELLENT	
ROUND BRILLIANT			59%	EXCELLENT	
10.70 - 10.77 X 6.61 MM			Medium Faceted	NONE	
Carat Weight				1691 LG48352248	
Color Grade					
Clarity Grade					
Color					
Depth					
Table					
Girdle					
Culet					
Polish					
Symmetry					
Fluorescence					
Inscriptions(s)					