



**ELECTRONIC COPY**

LG683546010  
Report verification at igi.org



February 22, 2025

IGI Report Number **LG683546010**

Description **LABORATORY GROWN DIAMOND**

Shape and Cutting Style **PRINCESS CUT**

Measurements **5.55 X 5.42 X 3.84 MM**

**GRADING RESULTS**

Carat Weight **1.02 CARAT**

Color Grade **G**

Clarity Grade **VS 1**

February 22, 2025  
IGI Report Number **LG683546010**  
Description **LABORATORY GROWN DIAMOND**  
Shape and Cutting Style **PRINCESS CUT**  
Measurements **5.55 X 5.42 X 3.84 MM**

**GRADING RESULTS**

Carat Weight **1.02 CARAT**

Color Grade **G**

Clarity Grade **VS 1**

**ADDITIONAL GRADING INFORMATION**

Polish **EXCELLENT**

Symmetry **VERY GOOD**

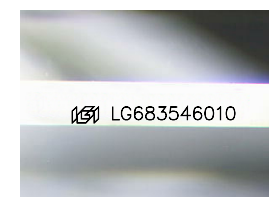
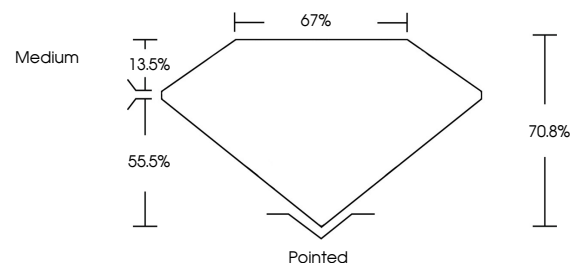
Fluorescence **NONE**

Inscription(s) **IGI LG683546010**

Comments: As Grown - No indication of post-growth treatment.

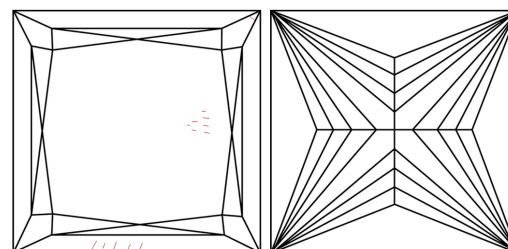
This Laboratory Grown Diamond was created by High Pressure High Temperature (HPHT) growth process. Type II

**PROPORTIONS**



Sample Image Used

**CLARITY CHARACTERISTICS**



**KEY TO SYMBOLS**

Red symbols indicate internal characteristics.  
Green symbols indicate external characteristics.

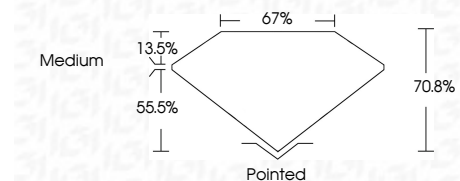
**COLOR**

D E F G H I J Faint Very Light Light

**CLARITY**

IF WS<sup>1-2</sup> VS<sup>1-2</sup> SI<sup>1-2</sup> I<sup>1-3</sup>

Internally Flawless Very Very Slightly Included Very Slightly Included Slightly Included Included



**ADDITIONAL GRADING INFORMATION**

Polish **EXCELLENT**

Symmetry **VERY GOOD**

Fluorescence **NONE**

Inscription(s) **IGI LG683546010**

Comments: As Grown - No indication of post-growth treatment.

This Laboratory Grown Diamond was created by High Pressure High Temperature (HPHT) growth process. Type II



**IGI**



February 22, 2025  
IGI Report No. LG683546010  
**PRINCESS CUT**  
5.55 X 5.42 X 3.84 MM  
1.02 CARAT  
Color Grade **G**  
Depth 70.8%  
Table 67%  
Girdle **Medium**  
Culet **Pointed**  
Polish **EXCELLENT**  
Symmetry **VERY GOOD**  
Fluorescence **NONE**  
Inscription(s) **IGI LG683546010**

Comments: As Grown - No indication of post-growth treatment. This Laboratory Grown Diamond was created by High Pressure High Temperature (HPHT) growth process. Type II